



43 Chapman Parade Faulconbridge NSW

5 🛏 2 🚿 3 🚗

LOCATION - Popular Faulconbridge location with easy access to highway, walk to schools and bus, close to bush walks and walking distance to Norman Lindsay Gallery & Cafe.

STYLE - 2 storey mainly brick home with tile roof on approximately 696 m2 block with front deck boasting stunning distant bush views.

LAYOUT - Upstairs large living (front deck access) which flows into open kitchen and dining area with rear deck access, 3 upstairs bedrooms with stunning renovated main bathroom and separate toilet, downstairs additional 2 bedrooms, huge second living space/rumpus, downstairs second bathroom and large internal laundry with convenient external access.

FEATURES - Modern kitchen with stainless steel

Type : House
Price : \$ 950,000
Land Size : 695.6 sqm
View : <https://www.chapmanrealestate.com.au/sale/nsw/hawkesbury/faulconbridge/residential/house/7327945>

[For full version visit the website](#)



Helen Harris
02 4751 8266



Claudia Hayes
02 4751 8266

43 CHAPMAN PARADE, FAULCONBRIDGE



First Floor



Ground Floor

INTERNAL
183 m²

EXTERNAL
43 m²

TOTAL
226 m²

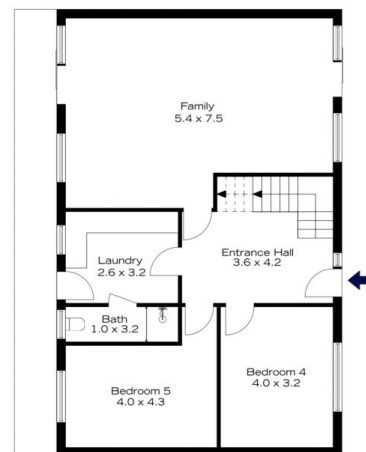


The floor plan is not to scale; measurements are indicative and in metres. All features included in this 3D plan are for inspiration purposes only. This is not an exact replica of the property or the position of exterior elements. Plans should not be relied on. Interested parties should make and rely on their own enquiries.

43 CHAPMAN PARADE, FAULCONBRIDGE



First Floor



Ground Floor

INTERNAL
183 m²

EXTERNAL
43 m²

TOTAL
226 m²



The floor plan is not to scale; measurements are indicative and in metres. Exterior elements are not in position. Plans should not be relied on. Interested parties should make and rely on their own enquiries.