



8 High View Avenue Faulconbridge NSW

4 2 5

LOCATION - Positioned in a quiet location with convenient access to Springwood High School and Faulconbridge Public, Springwood Aquatic Centre, Tom Hunter and Buttenshaw Park, bus and bush walks.

STYLE - Two storey brick and tile home on 696.6m² block, with side access to separate double garage.

LAYOUT - Three living rooms, 4 bedrooms all with built-ins main with walk-in, open plan kitchen lounge dining, two bathrooms, 3rd living is enclosed deck with spectacular views.

FEATURES - Gourmet kitchen with spectacular views, double oven, stone benches, dishwasher, air-conditioning, timber floors, double garage under main roof with internal access, single carport and separate 2 car garage at rear with side access, mostly level grassy yard with various fruit trees and fully fenced.

Price : \$ 960,000
Land Size : 696.6 sqm
View : <https://www.chapmanrealestate.com.au/sale/nsw/hawkesbury/faulconbridge/residential/house/7327701>



Jonathan Crisp
02 4751 8266

8 HIGH VIEW AVENUE, FAULCONBRIDGE



Ground Floor

INTERNAL
202 m²

EXTERNAL
60 m²

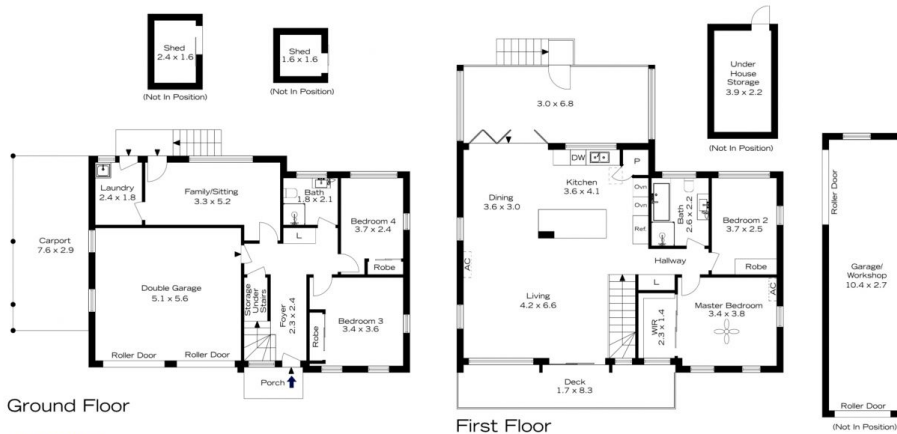
TOTAL
262 m²

First Floor



The floor plan is not to scale; measurements are indicative and in metres. All features included in this 3D plan are for inspiration purposes only. This is not an exact replica of the property or the position of exterior elements. Plans should not be relied on. Interested parties should make and rely on their own enquiries.

8 HIGH VIEW AVENUE, FAULCONBRIDGE



Ground Floor

INTERNAL
202 m²

EXTERNAL
60 m²

TOTAL
262 m²

First Floor



The floor plan is not to scale; measurements are indicative and in metres. Exterior elements are not in position. Plans should not be relied on. Interested parties should make and rely on their own enquiries.