



#### 4 Russell Avenue Faulconbridge NSW

3 1 1

**LOCATION:** Very popular and convenient location with easy access to Springwood Village, trains and buses, schools, parks, aquatic centre and amazing bush walks.

**STYLE:** Single level cottage set on a huge 4401 m2 (approx.) block, with a beautiful bush outlook.

**LAYOUT:** An easy flow floorplan encompasses 3 good size bedrooms, two with built in robes. There is an open plan kitchen and dining area flowing to a rear deck overlooking the sunny backyard with amazing bush views, and an adjoining lounge area complete with open fireplace.

**FEATURES:** This quaint mountains cottage offers a light filled spacious kitchen & dining with plenty of storage and

[For full version visit the website](https://www.chapmanrealestate.com.au)

**Type** : House  
**Price** : \$ 738,000  
**Land Size** : 4401 sqm  
**View** : <https://www.chapmanrealestate.com.au/sale/nsw/hawkesbury/faulconbridge/residential/house/7327619>



**Chris Rayner**  
02 4739 6200

# 4 RUSSELL AVENUE, FAULCONBRIDGE



**INTERNAL**  
93 m<sup>2</sup>

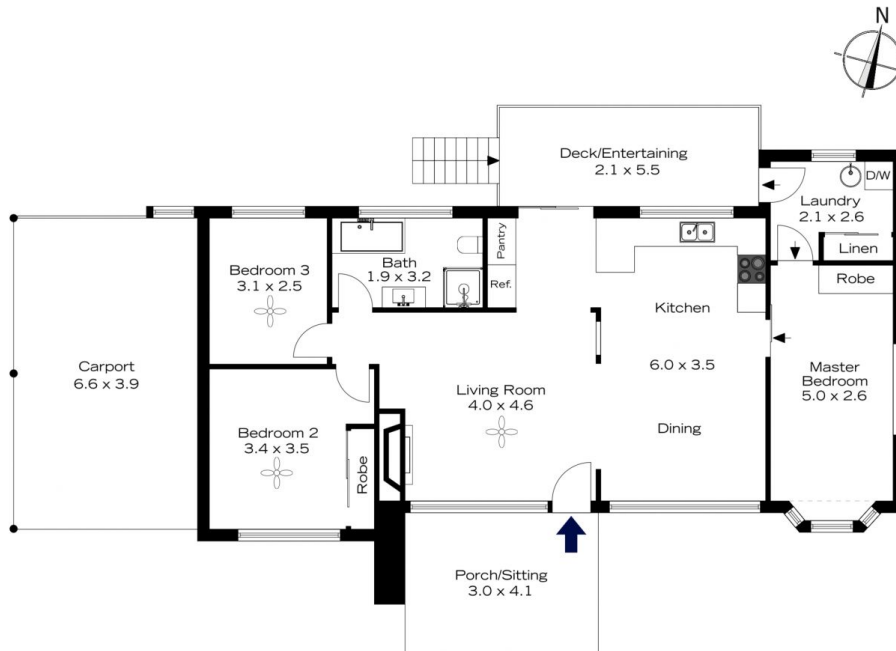
**EXTERNAL**  
24 m<sup>2</sup>

**TOTAL**  
117 m<sup>2</sup>



The floor plan is not to scale; measurements are indicative and in metres. All features included in this 3D plan are for inspiration purposes only. This is not an exact replica of the property or the position of exterior elements. Plans should not be relied on. Interested parties should make and rely on their own enquiries.

# 4 RUSSELL AVENUE, FAULCONBRIDGE



**INTERNAL**  
93 m<sup>2</sup>

**EXTERNAL**  
24 m<sup>2</sup>

**TOTAL**  
117 m<sup>2</sup>



The floor plan is not to scale; measurements are indicative and in metres. Exterior elements are not in position. Plans should not be relied on. Interested parties should make and rely on their own enquiries.