



36 Grand View Drive Mount Riverview NSW

4 🛏 2 🚿 2 🚗

LOCATION: Escaping to the bush, yet only 1.1km to local school, shops and cafe, and bus stop only 180 metres.

STYLE: Architecturally designed brick and tile residence set over 2 levels offering a flexible and spacious floor plan for the growing family. All set on a beautiful 1,644m2 slice of the Blue Mountains.

LAYOUT: At entry level is a large open living and dining flowing to the elevated covered deck. Gourmet kitchen with electric cooking, island bench and dishwasher, plus built in server/bar. 4 bedrooms, master with newly renovated ensuite, 2 more bedrooms with built in robes and oversized 4th bedroom/study/office on the lower level. Games/rumpus room gaining access to the rear yard, plus art studio (or theatre room), wine cellar, and powder room.

FEATURES: High raked ceilings, impressive suspended

Type	: House
Price	: \$ 1,286,000
Building Size	: 393 sqm
Land Size	: 1644 sqm
View	: https://www.chapmanrealestate.com.au/sale/nsw/hawkesbury/mount-riverview/residential/house/7327595



James Simadas
02 4782 5045



Helen Harris
02 4754 8266

[For full version visit the website](#)

<https://www.chapmanrealestate.com.au>

36 GRAND VIEW DRIVE, MOUNT RIVERVIEW



Ground Floor



Lower Floor

INTERNAL
314 m²

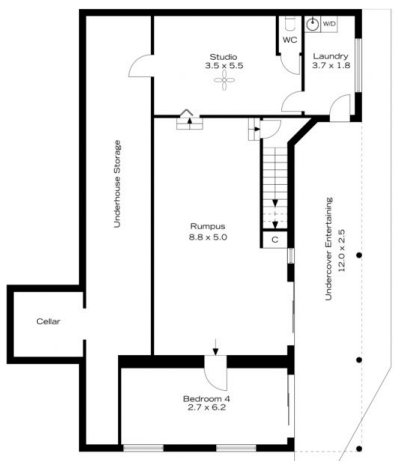
EXTERNAL
79 m²

TOTAL
393 m²

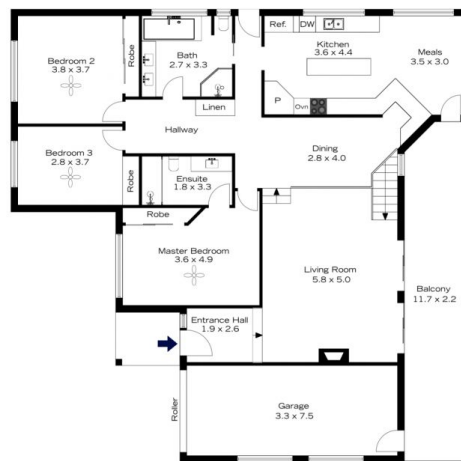
The floor plan is not to scale; measurements are indicative and in metres. All features included in this 3D plan are for inspiration purposes only. This is not an exact replica of the property or the position of exterior elements. Plans should not be relied on. Interested parties should make and rely on their own enquiries.



36 GRAND VIEW DRIVE, MOUNT RIVERVIEW



Ground Floor



Lower Floor

INTERNAL
314 m²

EXTERNAL
79 m²

TOTAL
393 m²

The floor plan is not to scale; measurements are indicative and in metres. Exterior elements are not in position. Plans should not be relied on. Interested parties should make and rely on their own enquiries.

