



49 Byrne Street Lapstone NSW

4 2 2

LOCATION - This large residence is situated in a quiet street on a sprawling 1647sqm block. Access to the M4 is convenient, only 2.7km from home, and public transport is easily accessible with Lapstone Railway Station located 1.6km away by car or a short 5 minute walk using the gully bridge. Glenbrook Village with its shops, parks, sporting fields and cafes is only a 5 minute drive by car, and Lapstone Public School is only 3 minutes away. The trainline is positioned behind the property and the Glenbrook National Park is only a stone's throw away.

STYLE - There are so many charming stylistic features in this property including curved, exposed brick walls, feature timber wall panels, slate floors and a spiral staircase. There are plenty of sliding doors in both the upper and lower

[For full version visit the website](https://www.chapmanrealestate.com.au)

Type : House
Price : \$ 1,063,000
Land Size : 1647 sqm
View : <https://www.chapmanrealestate.com.au/sale/nsw/blue-mountains-surrounds/lapstone/residential/house/7327590>



Kate Spence
02 4739 6200

49 BYRNE STREET, LAPSTONE



INTERNAL
183 m²

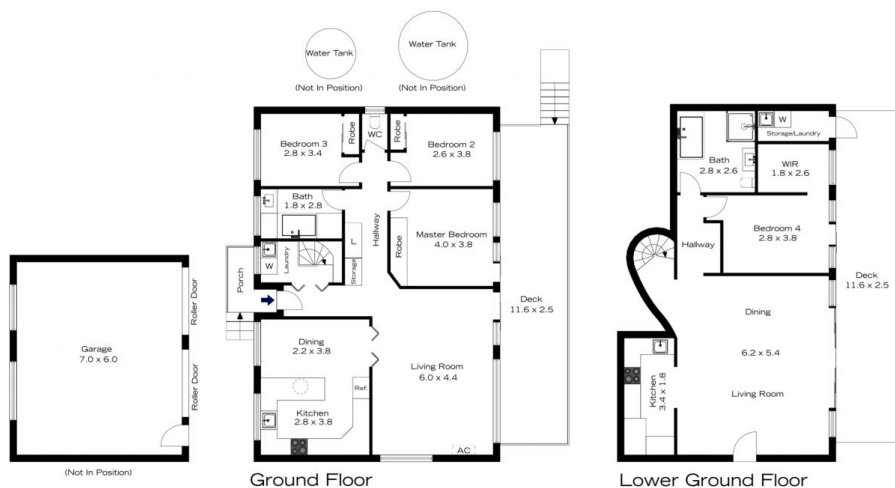
EXTERNAL
66 m²

TOTAL
249 m²



The floor plan is not to scale; measurements are indicative and in metres. All features included in this 3D plan are for inspiration purposes only. This is not an exact replica of the property or the position of exterior elements. Plans should not be relied on. Interested parties should make and rely on their own enquiries.

49 BYRNE STREET, LAPSTONE



INTERNAL
183 m²

EXTERNAL
66 m²

TOTAL
249 m²



The floor plan is not to scale; measurements are indicative and in metres. Exterior elements are not in position. Plans should not be relied on. Interested parties should make and rely on their own enquiries.