



68 Cross Street Warrimoo NSW

3 2 2

LOCATION: Sunny corner position within a walk to rail services, bus, school, tennis court, ovals, park and bush walks.

STYLE: Single level brick and tile lifestyle home designed for ultimate comfort. Beautifully presented. Sparkling in ground salt water swimming pool.

LAYOUT: 2 separate living rooms, dining, 3 bedrooms plus study (potential to convert to a 4 bedroom home) 2 bathrooms (master with ensuite, walk in robe and built in robe).

FEATURES: Level land, popular location, modern open plan kitchen with gas cooking, breakfast bar, reverse cycle ducted air conditioning, Gas and slow combustion fire places, timber floorboards, freshly painted throughout, 3rd toilet in the internal laundry, detached double lock up garage, large entertainers deck, level grassy play areas, fire pit sitting area and a huge concrete inground saltwater

Price : \$ 990,000

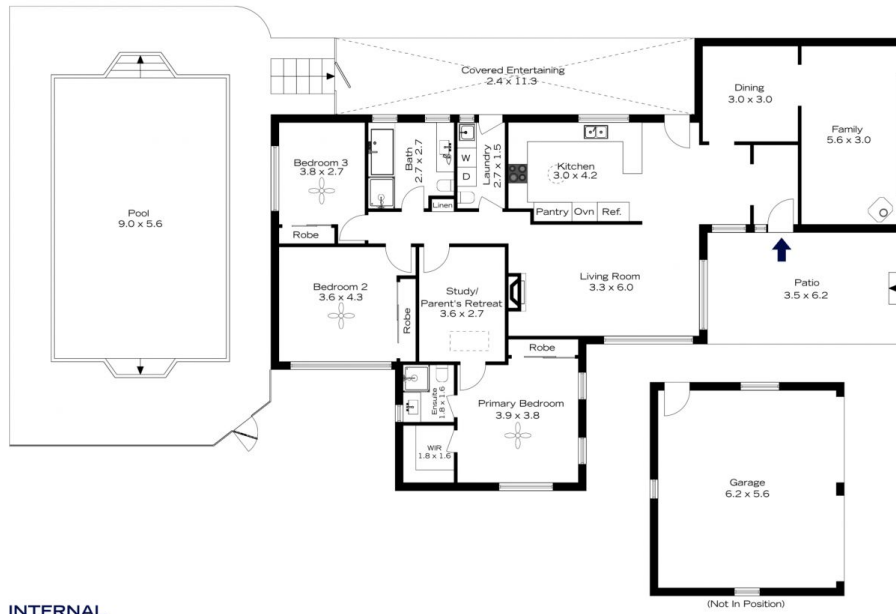
Land Size : 710 sqm

View : <https://www.chapmanrealestate.com.au/sale/nsw/hawkesbury/warrimoo/residential/house/7317927>



Jonathan Crisp
02 4751 8266

68 CROSS STREET, WARRIMOO



INTERNAL
151 m²

EXTERNAL
165 m²

TOTAL
316 m²



The floor plan is not to scale; measurements are indicative and in metres. Exterior elements are not in position. Plans should not be relied on. Interested parties should make and rely on their own enquiries.

68 CROSS STREET, WARRIMOO



INTERNAL
151 m²

EXTERNAL
165 m²

TOTAL
316 m²



The floor plan is not to scale; measurements are indicative and in metres. All features included in this 3D plan are for inspiration purposes only. This is not an exact replica of the property or the position of exterior elements. Plans should not be relied on. Interested parties should make and rely on their own enquiries.