

## 26 Bruce Road Glenbrook NSW

3 2 3

**LOCATION:** Highly sought-after village side Glenbrook, moments to the National Park with bushwalks, lookouts, swimming holes (including Jellybean Pool), close to village shops and cafes (approx. 1km), rail services to Sydney, bus, ovals, cinema, and parks.

**STYLE:** This home is perfect for raising little nature lovers. Sitting high amongst the trees and natural surrounds, nestled on approximately 3320m<sup>2</sup> block.

**LAYOUT:** Split level, main living with pitch ceilings exuding an architectural feel, 2 bedrooms with built-ins on the lower level, kitchen, dining/second living space and master on the upper level looking out to the beautiful bush backyard, internal laundry.

**FEATURES:** Sundrenched kitchen with ample bench and storage space, skylights and abundance of windows letting

**Type** : House  
**Price** : \$ 820,000  
**Land Size** : 3320 sqm  
**View** : <https://www.chapmanrealestate.com.au/sale/nsw/blue-mountains-surrounds/glenbrook/residential/house/7304504>



**Rachel Power**  
02 4739 4311



**Kate Spence**  
02 4739 6200

[For full version visit the website](https://www.chapmanrealestate.com.au)

<https://www.chapmanrealestate.com.au>

# 26 BRUCE ROAD, GLENBROOK



**INTERNAL**  
138 m<sup>2</sup>

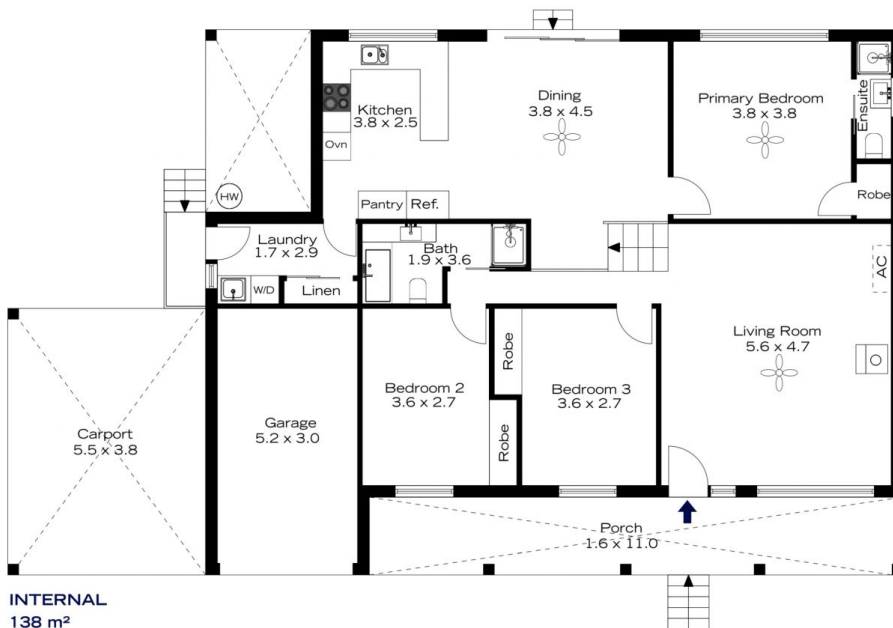
**EXTERNAL**  
53 m<sup>2</sup>

**TOTAL**  
191 m<sup>2</sup>



The floor plan is not to scale; measurements are indicative and in metres. All features included in this 3D plan are for inspiration purposes only. This is not an exact replica of the property or the position of exterior elements. Plans should not be relied on. Interested parties should make and rely on their own enquiries.

# 26 BRUCE ROAD, GLENBROOK



**INTERNAL**  
138 m<sup>2</sup>

**EXTERNAL**  
53 m<sup>2</sup>

**TOTAL**  
191 m<sup>2</sup>



The floor plan is not to scale; measurements are indicative and in metres. Exterior elements are not in position. Plans should not be relied on. Interested parties should make and rely on their own enquiries.