



### 46 Emu Road Glenbrook NSW

4 3 3

**LOCATION** - A sanctuary of privacy & privilege in the location of a lifetime. Nestled on an allotment that has the ambiance of a Dural or Bowral lifestyle feel. Set on a rare 2353sqm block with rear access backing to Darks Common. Moments to local City & escarpment lookouts, bush walks, Lapstone public school, tennis, local oval, childrens playground, netball courts. Walk to rail, bus and Village centre.

**STYLE** - Breathtaking single level Hamptons homestead. Brand new luxurious lifestyle residence with grand dimensions, & high end feel throughout. An array of sumptuous living & entertaining precincts for every occasion, with pool views from multiple rooms. A focus on seamless transitions creating a natural indoor/outdoor flow.

**Type** : House  
**Price** : \$ 3,200,000  
**Land Size** : 2352 sqm  
**View** : <https://www.chapmanrealestate.com.au/sale/nsw/blue-mountains-surrounds/glenbrook/residential/house/7303566>



**Milton Player**  
02 4739 4311

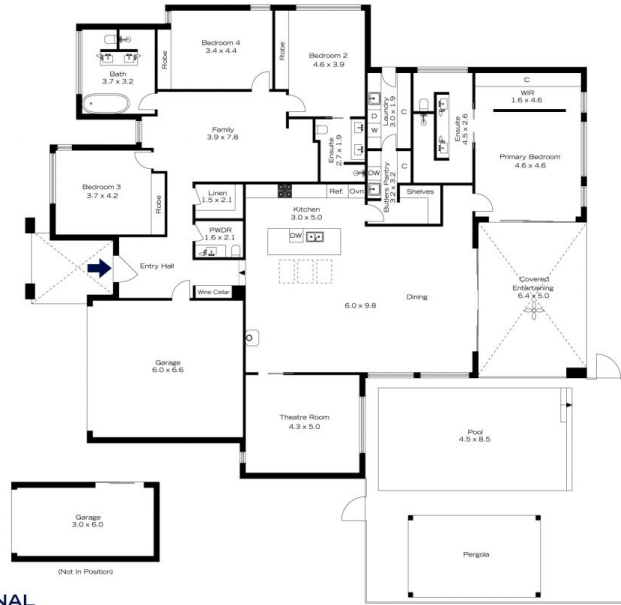
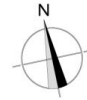


**Glen Power**  
02 4739 4311

[For full version visit the website](https://www.chapmanrealestate.com.au)

<https://www.chapmanrealestate.com.au>

# 46 EMU ROAD, GLENBROOK

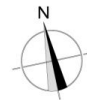


**INTERNAL**  
345 m<sup>2</sup>  
**EXTERNAL**  
156 m<sup>2</sup>  
**TOTAL**  
501 m<sup>2</sup>



The floor plan is not to scale; measurements are indicative and in metres. Exterior elements are not in position. Plans should not be relied on. Interested parties should make and rely on their own enquiries.

# 46 EMU ROAD, GLENBROOK



**INTERNAL**  
345 m<sup>2</sup>  
**EXTERNAL**  
156 m<sup>2</sup>  
**TOTAL**  
501 m<sup>2</sup>



The floor plan is not to scale; measurements are indicative and in metres. All features included in this 3D plan are for inspiration purposes only. This is not an exact replica of the property or the position of exterior elements. Plans should not be relied on. Interested parties should make and rely on their own enquiries.