



## 10 Kyre Crescent Emu Plains NSW

4 🛏 2 🚿

**LOCATION** - Positioned in a quiet sought after location this family home has so much to offer and won't last long. Offering an easy living location close to local schools, train station, bus stop, Lennox Village Shopping Centre and parks.

**STYLE** - Renovated single level brick home with colourbond roof, nestled on a 625m<sup>2</sup>, custom finishes combine beautifully, while the home offers sleek, contemporary living, level manicured garden bathing in natural light and loads of zen character.

**LAYOUT** - Four generous sized bedrooms with BIRs, Master offers a modern ensuite with dual showerheads and large walk in robe. Modern family bathroom features an impressive stone bath, wall hung vanity, with floor to ceiling tiles & functional internal laundry has abundance of storage

**Type** : House  
**Price** : \$ 1,095,000  
**Land Size** : 625 sqm  
**View** : <https://www.chapmanrealestate.com.au/sale/nsw/western-sydney/emu-plains/residential/house/7297582>



**Claudia Hayes**  
02 4751 8266

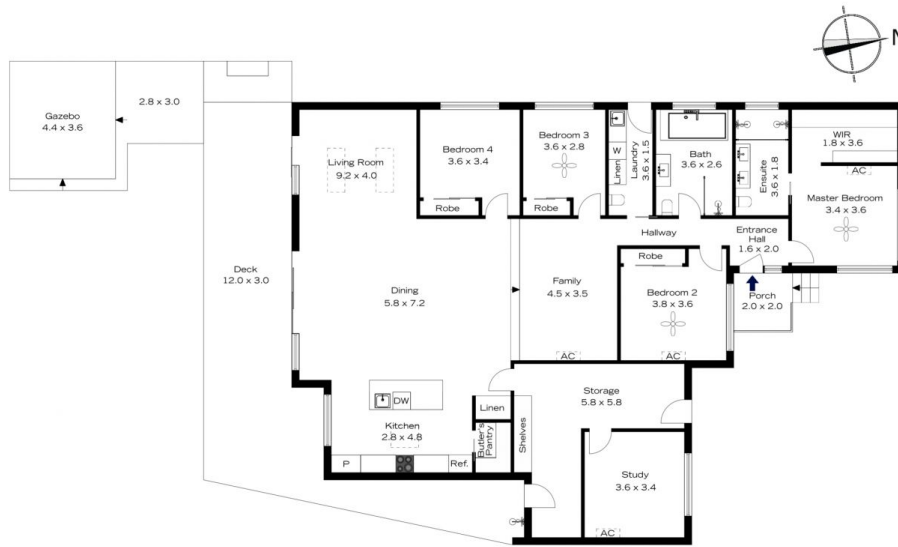


**Sharon Lampert**  
02 4739 4311

[For full version visit the website](https://www.chapmanrealestate.com.au)

<https://www.chapmanrealestate.com.au>

# 10 KYRE CRESCENT, EMU PLAINS



**INTERNAL**  
213 m<sup>2</sup>

**EXTERNAL**  
88 m<sup>2</sup>

**TOTAL**  
301 m<sup>2</sup>



The floor plan is not to scale; measurements are indicative and in metres. Exterior elements are not in position. Plans should not be relied on. Interested parties should make and rely on their own enquiries.

# 10 KYRE CRESCENT, EMU PLAINS



**INTERNAL**  
213 m<sup>2</sup>

**EXTERNAL**  
88 m<sup>2</sup>

**TOTAL**  
301 m<sup>2</sup>



The floor plan is not to scale; measurements are indicative and in metres. All features included in this 3D plan are for inspiration purposes only. This is not an exact replica of the property or the position of exterior elements. Plans should not be relied on. Interested parties should make and rely on their own enquiries.