



2 Woollybutt Place Mount Riverview NSW

4 2 2

LOCATION - Perfectly positioned in a sought after cul-de-sac, within walking distance to shops, cafés, parks, school and day care (all within approx. 750m) and moments to glorious bush walks.

STYLE - High-set, single level brick and tile home on a corner block of approx. 702.9sqm, lovingly maintained yet ready to make your own.

LAYOUT - 2 living rooms, formal dining, 4 good sized bedrooms, master with ensuite and built-in robes to 3, open plan kitchen, large main bathroom with separate toilet, laundry with external access, 2 bathrooms overall.

FEATURES - Huge original timber style kitchen with breakfast bar and ample storage, reverse cycle air conditioning, slow combustion fireplace, skylight, bay window, front veranda, back patio, low maintenance

Type : House
Price : \$ 950,000
Land Size : 702.9 sqm
View : <https://www.chapmanrealestate.com.au/sale/nsw/hawkesbury/mount-riverview/residential/house/7291338>

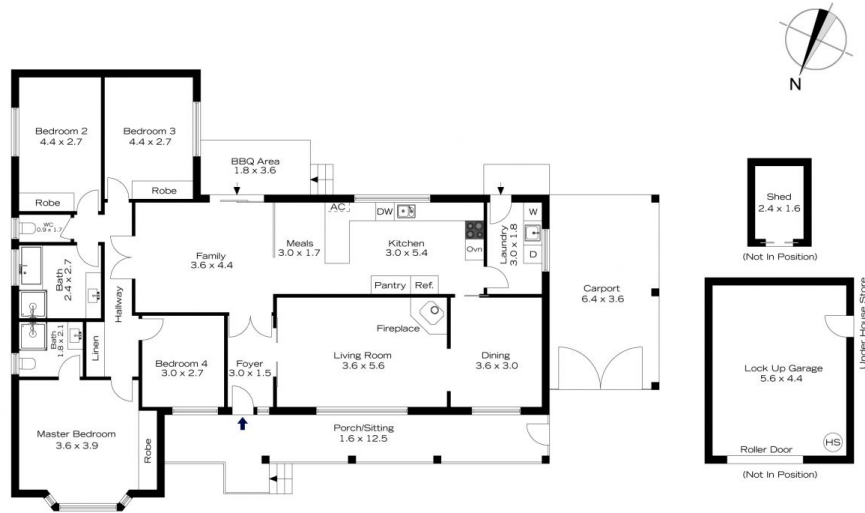


Glen Power
02 4739 4311

[For full version visit the website](https://www.chapmanrealestate.com.au)

<https://www.chapmanrealestate.com.au>

2 WOOLYBUTT PLACE, MOUNT RIVERVIEW



INTERNAL
177 m²
EXTERNAL
55 m²
TOTAL
232 m²



The floor plan is not to scale; measurements are indicative and in metres. Exterior elements are not in position. Plans should not be relied on. Interested parties should make and rely on their own enquiries.

2 WOOLYBUTT PLACE, MOUNT RIVERVIEW



INTERNAL
177 m²
EXTERNAL
55 m²
TOTAL
232 m²



The floor plan is not to scale; measurements are indicative and in metres. All features included in this 3D plan are for inspiration purposes only. This is not an exact replica of the property or the position of exterior elements. Plans should not be relied on. Interested parties should make and rely on their own enquiries.