



19 Ellison Road Springwood NSW

3 2 1

LOCATION- Perfectly positioned on the high side of the street, this three bedroom home is situated in a very popular and convenient location. This beautiful residence offers easy access to local schools, shops, parks, Springwood Golf Club, public transport and amazing Blue Mountains bush walks.

STYLE - This elevated single level, cottage-style home is made of weatherboard construction and includes a Colorbond roof. It offers a contemporary style and design with quality finishes, capturing a true Mountains cottage feel throughout. This charming property has wooden floors throughout, lovely detailed cornices on the ceiling. The kitchen has a rustic charm with shaker style cupboards and custom plate racks. It features stainless steel appliances

Type : House
Price : \$ 950,000
Land Size : 754 sqm
View : <https://www.chapmanrealestate.com.au/sale/nsw/hawkesbury/springwood/residential/home/7287504>



Kate Spence
02 4739 6200

[For full version visit the website](#)

<https://www.chapmanrealestate.com.au>

19 ELLISON ROAD, SPRINGWOOD



Lower Ground Floor

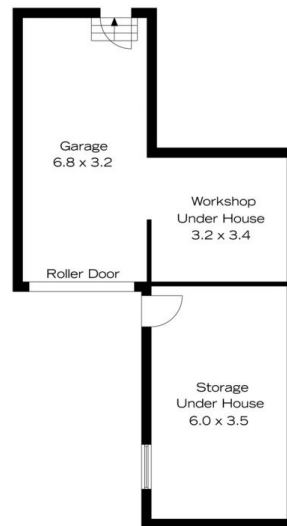
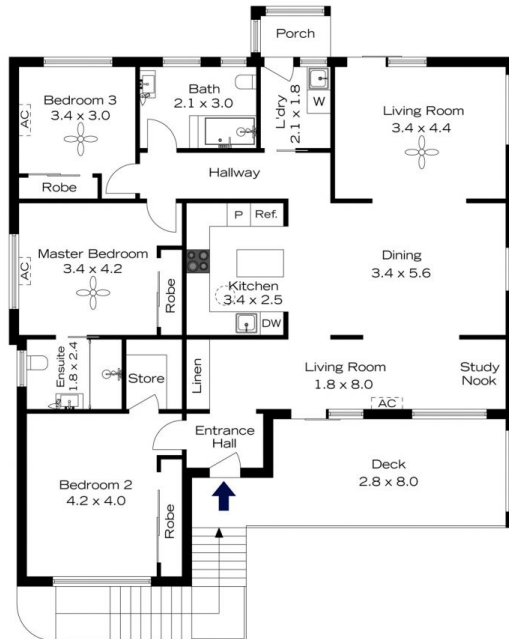
Ground Floor

INTERNAL
185 m²
EXTERNAL
21 m²
TOTAL
206 m²



The floor plan is not to scale; measurements are indicative and in metres. Exterior elements are not in position. Plans should not be relied on. Interested parties should make and rely on their own enquiries.

19 ELLISON ROAD, SPRINGWOOD



Lower Ground Floor

Ground Floor

INTERNAL
185 m²
EXTERNAL
21 m²
TOTAL
206 m²



The floor plan is not to scale; measurements are indicative and in metres. All features included in this 3D plan are for inspiration purposes only. This is not an exact replica of the property or the position of exterior elements. Plans should not be relied on. Interested parties should make and rely on their own enquiries.