



19 Turnbull Street Winmalee NSW

4 2 1

LOCATION - Positioned in a quiet location with convenient access to Winmalee High, 1.3km to Winmalee Shopping Village, Summerhayes Park, bus and bush walks.

STYLE - Mostly single level brick home with restored tiled roof set on a large 765m² block.

LAYOUT - Two generous living rooms, 4 bedrooms - master with renovated ensuite and 3 with built in robes, open kitchen that flows onto 2nd living space and undercover deck, renovated three way bathroom with double vanity, spa bath, shower. Good sized internal laundry with external access, single garage with room for workshop and extra storage.

FEATURES - Open plan kitchen with lots of bench space/storage, sky light, electric appliances, dishwasher and lots of power points, reverse cycle A/C, downlights, fans in all bedrooms, freshly painted throughout, new carpet, plantation shutters, large fully fenced rear yard.

Price : \$ 880,000

Land Size : 765 sqm

View : <https://www.chapmanrealestate.com.au/sale/nsw/hawkesbury/winmalee/residential/house/7276274>



Jonathan Crisp
02 4751 8266



Claudia Hayes
02 4751 8266

19 TURNBULL STREET, WINMALEE



INTERNAL
150 m²

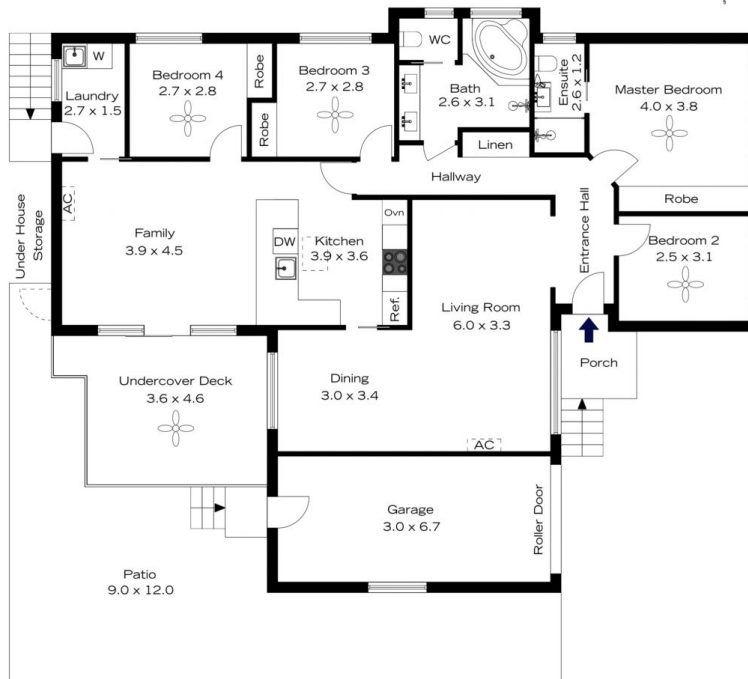
EXTERNAL
76 m²

TOTAL
226 m²



The floor plan is not to scale; measurements are indicative and in metres. All features included in this 3D plan are for inspiration purposes only. This is not an exact replica of the property or the position of exterior elements. Plans should not be relied on. Interested parties should make and rely on their own enquiries.

19 TURNBULL STREET, WINMALEE



INTERNAL
150 m²

EXTERNAL
76 m²

TOTAL
226 m²



The floor plan is not to scale; measurements are indicative and in metres. Exterior elements are not in position. Plans should not be relied on. Interested parties should make and rely on their own enquiries.