



## 22B High Street Glenbrook NSW

4 3 2

**LOCATION** - Privately positioned along a laneway, within walking distance to bus, school, Bowling club, playgrounds, ovals, local lookouts, local hotel, lagoon, cinema, restaurants, cafes and shops.

**STYLE** - Architecturally designed split level residence with 6 decks, bush outlook and glorious mountains feel. Romantic lifestyle feel with outdoor jacuzzi and billiard table.

**LAYOUT** - 2 living rooms (main with high soaring ceilings), 4 double bedrooms (4th bedroom currently set up as a games room and home office), 3 with built-in robes, master with extensive walk-in robe and ensuite with dual basins, 3 bathrooms (all with stone basin tops), oversized family laundry with custom cabinetry.

**FEATURES** - Open plan kitchen with granite tops and

**Type** : House  
**Price** : \$ 1,292,500  
**Land Size** : 1944 sqm  
**View** : <https://www.chapmanrealestate.com.au/sale/nsw/blue-mountains-surrounds/glenbrook/residential/house/7264921>



**Milton Player**  
02 4739 4311

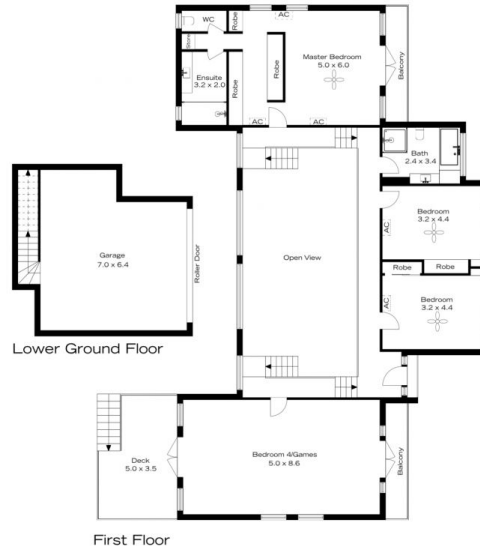
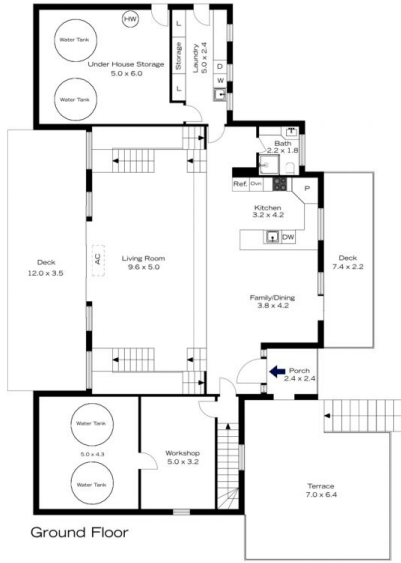


**Glen Power**  
02 4739 4311

[For full version visit the website](https://www.chapmanrealestate.com.au)

<https://www.chapmanrealestate.com.au>

# 22B HIGH STREET, GLENBROOK



**INTERNAL**  
386 m<sup>2</sup>

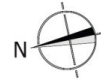
**EXTERNAL**  
137 m<sup>2</sup>

**TOTAL**  
523 m<sup>2</sup>



The floor plan is not to scale; measurements are indicative and in metres. Exterior elements are not in position. Plans should not be relied on. Interested parties should make and rely on their own enquiries.

# 22B HIGH STREET, GLENBROOK



**INTERNAL**  
386 m<sup>2</sup>

**EXTERNAL**  
137 m<sup>2</sup>

**TOTAL**  
523 m<sup>2</sup>



The floor plan is not to scale; measurements are indicative and in metres. All features included in this 3D plan are for inspiration purposes only. This is not an exact replica of the property or the position of exterior elements. Plans should not be relied on. Interested parties should make and rely on their own enquiries.