



22 Hall Parade Hazelbrook NSW

3 1 2

LOCATION - Within 1.4 km drive to Hazelbrook village and Train Station. 500m to Korowal school and 2.2km to Primary school, easy access to local bush walks, parks and ovals.

STYLE - A well-presented single level brick home with tile roof. Set of a large 1347m² block featuring private established gardens and trees.

LAYOUT - Large combined lounge and dining room, spacious kitchen with gas cooktop, three bedrooms including generous main and built in robes, additional built in to the second bedroom, large main bathroom with separate toilet and internal laundry.

FEATURES - Neat and tidy kitchen over-looking the rear yard, ducted air conditioning, open fire place, carpet

Price : \$ 760,000
Land Size : 1347 sqm
View : <https://www.chapmanrealestate.com.au/sale/nsw/blue-mountains-surrounds/hazelbrook/residential/house/7245303>



Jonathan Crisp
02 4751 8266



Melinda Carter
02 4758 8603

22 HALL PARADE, HAZELBROOK



INTERNAL
90 m²

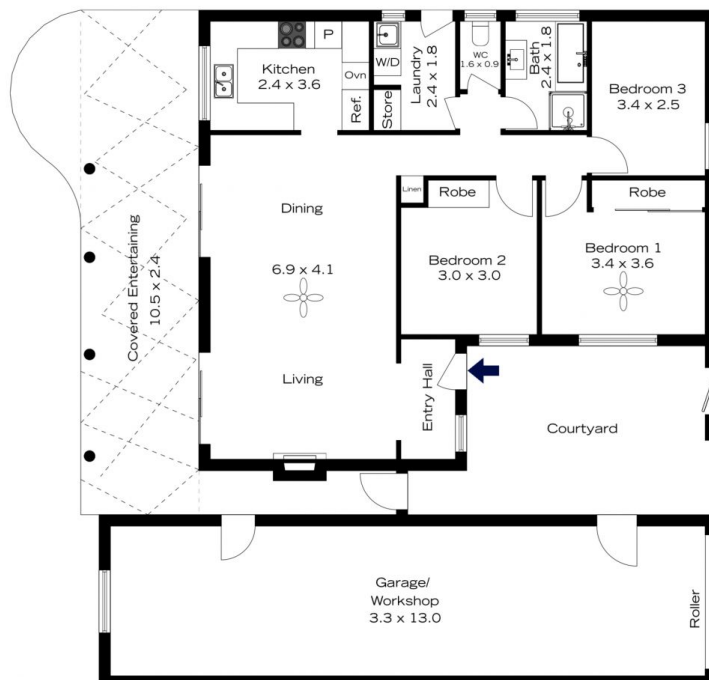
EXTERNAL
59 m²

TOTAL
149 m²



The floor plan is not to scale; measurements are indicative and in metres. All features included in this 3D plan are for inspiration purposes only. This is not an exact replica of the property or the position of exterior elements. Plans should not be relied on. Interested parties should make and rely on their own enquiries.

22 HALL PARADE, HAZELBROOK



INTERNAL
90 m²

EXTERNAL
59 m²

TOTAL
149 m²



The floor plan is not to scale; measurements are indicative and in metres. Exterior elements are not in position. Plans should not be relied on. Interested parties should make and rely on their own enquiries.