



14 Koala Road Blaxland NSW

3 1 1

LOCATION - Tucked away in a sought-after pocket and close to everything with a short 650m (approx.) stroll to Blaxland station and pedestrian overpass to shops, cafes, restaurants & medical centre, and with schools, parks, bush walks, bike tracks and more right on your doorstep.

STYLE - Impeccably renovated, north facing, high set brick & tile home, offering sun drenched living and spacious outdoor entertaining.

LAYOUT - Generous living room, dining room off modern kitchen, 3 bedrooms (2 with built in robes), renovated bathroom and laundry with external access and 2nd toilet.

FEATURES - Chefs style kitchen with Caesarstone benches, Methven tapware, S/S appliances, ample storage and servery window to the covered and generous entertainer's deck with stunning glass balustrade flowing

Type : House
Price : \$ 935,000
Land Size : 583 sqm
View : <https://www.chapmanrealestate.com.au/sale/nsw/blue-mountains-surrounds/blaxland/residential/house/7238451>



Glen Power
02 4739 4311

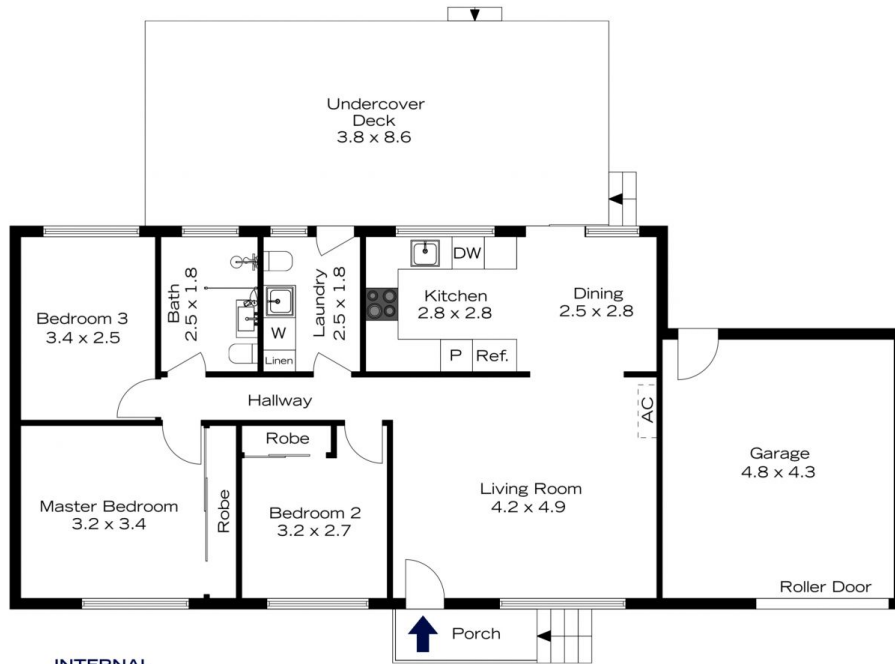


Claudia Hayes
02 4751 8266

[For full version visit the website](https://www.chapmanrealestate.com.au)

<https://www.chapmanrealestate.com.au>

14 KOALA ROAD, BLAXLAND



INTERNAL
100 m²

EXTERNAL
35 m²

TOTAL
135 m²

The floor plan is not to scale; measurements are indicative and in metres. Exterior elements are not in position. Plans should not be relied on. Interested parties should make and rely on their own enquiries.



14 KOALA ROAD, BLAXLAND



INTERNAL
100 m²

EXTERNAL
35 m²

TOTAL
135 m²

The floor plan is not to scale; measurements are indicative and in metres. All features included in this 3D plan are for inspiration purposes only. This is not an exact replica of the property or the position of exterior elements. Plans should not be relied on. Interested parties should make and rely on their own enquiries.

