



4 Darwin Drive Lapstone NSW

3 2 1

LOCATION - High set, commanding position in the sought-after location of Lapstone. The property is within a short drive from Glenbrook Village with its shops, cafes, restaurants, sporting fields (approx 2.6km) and approx 700m to Lapstone Station and 1.4km to Lapstone Public School. There are beautiful bush walks to enjoy right on your doorstep and you have quick and easy access to the M4 Motorway.

STYLE - A beautiful & sunlit single level brick veneer home with cladding and tile roof offering filtered views with a magnificent feel throughout. Nestled on an approximately 765m² block.

LAYOUT - 2 living rooms, 3 bedrooms (two with built-in wardrobes), ensuite, light filled dining room and open plan kitchen overlooking the courtyard (with glimpses of the city)

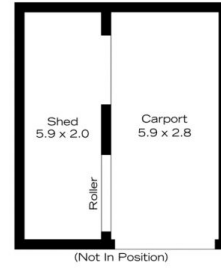
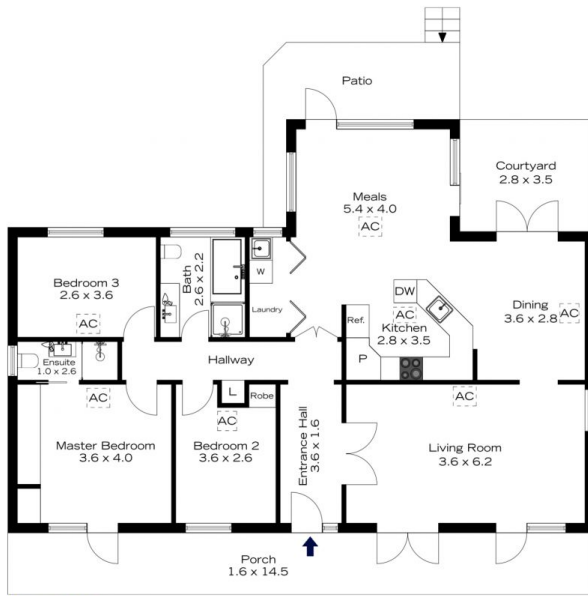
[For full version visit the website](https://www.chapmanrealestate.com.au)

Type : House
Price : \$ 890,000
Land Size : 765 sqm
View : <https://www.chapmanrealestate.com.au/sale/nsw/blue-mountains-surrounds/lapstone/residential/house/7232221>



Rachel Power
02 4739 4311

4 DARWIN DRIVE, LAPSTONE



INTERNAL
120 m²

EXTERNAL
46 m²

TOTAL
166 m²



The floor plan is not to scale; measurements are indicative and in metres. Exterior elements are not in position. Plans should not be relied on. Interested parties should make and rely on their own enquiries.

4 DARWIN DRIVE, LAPSTONE



INTERNAL
120 m²

EXTERNAL
46 m²

TOTAL
166 m²



The floor plan is not to scale; measurements are indicative and in metres. All features included in this 3D plan are for inspiration purposes only. This is not an exact replica of the property or the position of exterior elements. Plans should not be relied on. Interested parties should make and rely on their own enquiries.