



12 The Glen Crescent Springwood NSW

2 1 1

LOCATION - Highly popular location, peaceful and quiet with convenient access (within 1km) to Springwood village, shops, cafes and rail, and close to bus and popular bush walks.

STYLE - Brick and tile split level villa in strata title complex very close to town.

LAYOUT - 2 living spaces, generous lounge and separate open family/dining flowing outside to the private courtyard, 2 double bedrooms with built-ins, central kitchen and bathroom, laundry and single lock up garage under main roof.

FEATURES - Open kitchen with good storage, freshly cleaned carpet, ceiling fan and delightful paved private courtyard bathed in natural light. An ideal investment, first home or downsize (aka 12/2 Valley Road, Springwood).

Type : House

Price : \$ 600,000

View : <https://www.chapmanrealestate.com.au/sale/nsw/hawkesbury/springwood/residential/house/7208777>



Helen Harris
02 4751 8266

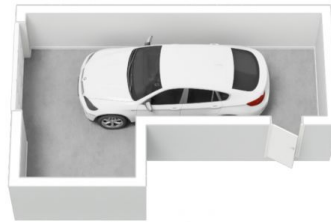


Claudia Hayes
02 4751 8266

[For full version visit the website](https://www.chapmanrealestate.com.au)

<https://www.chapmanrealestate.com.au>

12 THE GLEN CRESCENT, SPRINGWOOD



Lower Ground



Upper Ground

INTERNAL
108 m²

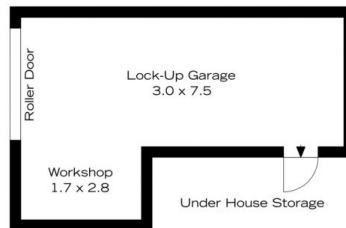
EXTERNAL
53 m²

TOTAL
161 m²

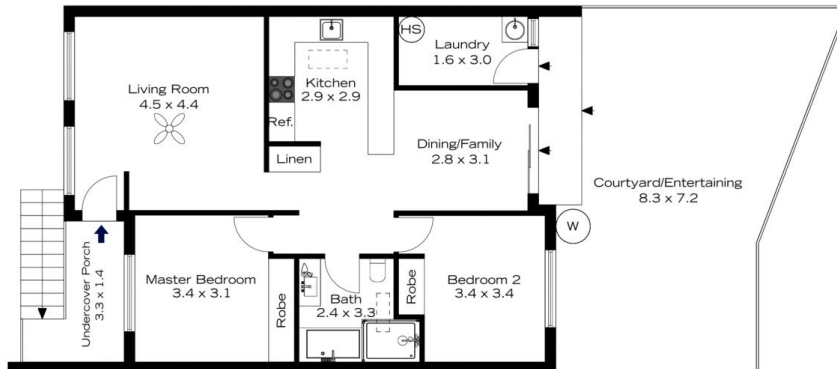


The floor plan is not to scale; measurements are indicative and in metres. All features included in this 3D plan are for inspiration purposes only. This is not an exact replica of the property or the position of exterior elements. Plans should not be relied on. Interested parties should make and rely on their own enquiries.

12 THE GLEN CRESCENT, SPRINGWOOD



Lower Ground



Upper Ground

INTERNAL
108 m²

EXTERNAL
53 m²

TOTAL
161 m²



The floor plan is not to scale; measurements are indicative and in metres. Exterior elements are not in position. Plans should not be relied on. Interested parties should make and rely on their own enquiries.