

7 Gregory Terrace Lapstone NSW

4 2 1

LOCATION - Enticing, relaxed, convenient and tightly held location. Walk to rail services, bus, Lapstone Public School, oval, children's playground, tennis courts, local escarpment outlooks and bush walks. Fast and easy access to M4.

STYLE - Exemplifying luxury and lifestyle at its highest, with magnificent and extensive jetliner views of Sydney Met, Clty CBD skyline, and The Nepean River, this delightfully renovated high set brick and tile sun-drenched residence is blessed with a super large in-ground salt water swimming pool, and expansive level back yard with room even for a fire pit area and impressive vege garden.

LAYOUT - 1 - 2 living rooms, dining, 4 bedrooms (4th bedroom/ 2nd living room could also convert to granny flat/ teenage retreat as it is a downstairs bedsitter style large room with Murphy bed and bathroom), 2 updated quality

Type : House
Price : \$ 1,250,000
Land Size : 784 sqm
View : <https://www.chapmanrealestate.com.au/sale/nsw/blue-mountains-surrounds/lapstone/residential/house/7174537>

[For full version visit the website](https://www.chapmanrealestate.com.au)

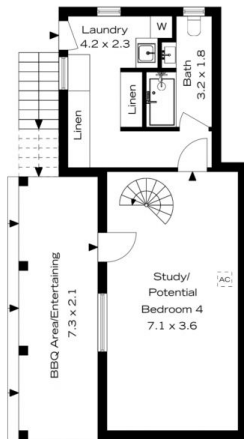


Milton Player
02 4739 4311

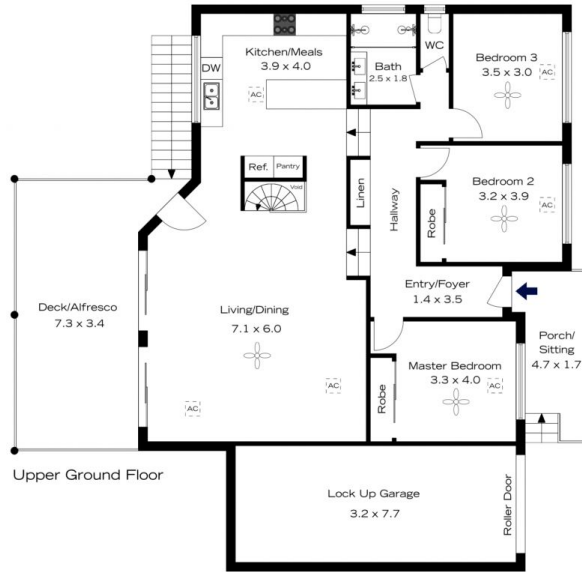


Glen Power
02 4739 4311

7 GREGORY TERRACE, LAPSTONE



Lower Ground Floor



Upper Ground Floor

Lock Up Garage
3.2 x 7.7

INTERNAL
209 m²

EXTERNAL
50 m²

TOTAL
259 m²



The floor plan is not to scale; measurements are indicative and in metres. Exterior elements are not in position. Plans should not be relied on. Interested parties should make and rely on their own enquiries.

7 GREGORY TERRACE, LAPSTONE



Lower Ground Floor



Upper Ground Floor

INTERNAL
209 m²

EXTERNAL
50 m²

TOTAL
259 m²



The floor plan is not to scale; measurements are indicative and in metres. All features included in this 3D plan are for inspiration purposes only. This is not an exact replica of the property or the position of exterior elements. Plans should not be relied on. Interested parties should make and rely on their own enquiries.