



## 212 Rusden Road Mount Riverview NSW

4 2 1

**LOCATION** - Set on an enormous near level block with bushy outlook, this home is located just moments to popular Mount Riverview shops, cafe, pre-school, primary school, bus stop, bush walks and parks. Offering a perfect blend for family living and convenience.

**STYLE** - Modern and sleek single level brick and tile home with flawless finishes.

**ACCOMMODATION** - Ideal for the family, this home easily incorporates 2 separate living areas, 4 bedrooms and a home office or potential 5th bedroom.

**FEATURES** - A stunning combination of formal and informal living spaces, this home has been expertly

[For full version visit the website](https://www.chapmanrealestate.com.au)

**Type** : House  
**Price** : \$ 1,290,000  
**Land Size** : 1422 sqm  
**View** : <https://www.chapmanrealestate.com.au/sale/nsw/hawkesbury/mount-riverview/residential/house/7173949>



**Chris Rayner**  
02 4739 6200

# 212 RUSDEN ROAD, MOUNT RIVERVIEW



**INTERNAL**  
177 m<sup>2</sup>

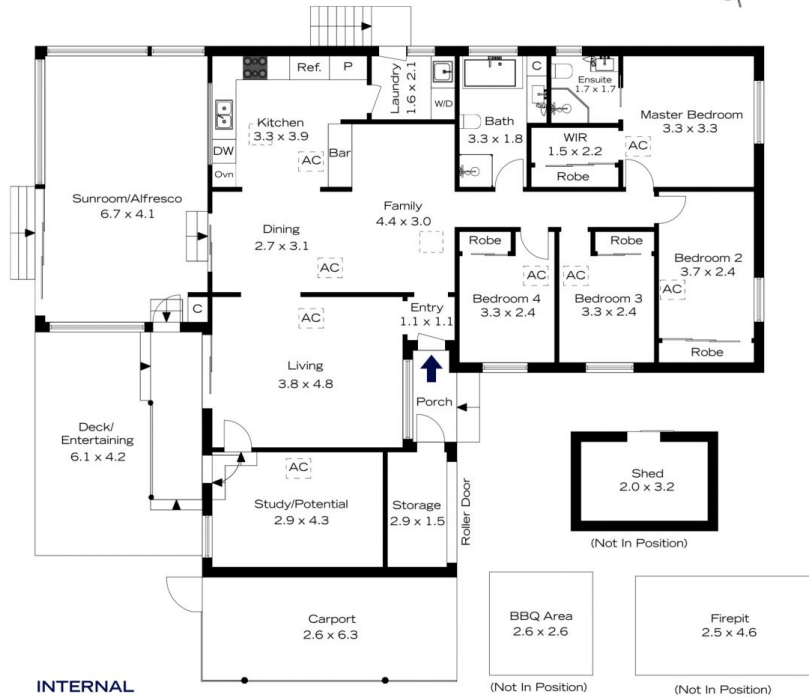
**EXTERNAL**  
44 m<sup>2</sup>

**TOTAL**  
221 m<sup>2</sup>



The floor plan is not to scale; measurements are indicative and in metres. All features included in this 3D plan are for inspiration purposes only. This is not an exact replica of the property or the position of exterior elements. Plans should not be relied on. Interested parties should make and rely on their own enquiries.

# 212 RUSDEN ROAD, MOUNT RIVERVIEW



**INTERNAL**  
177 m<sup>2</sup>

**EXTERNAL**  
44 m<sup>2</sup>

**TOTAL**  
221 m<sup>2</sup>



The floor plan is not to scale; measurements are indicative and in metres. Exterior elements are not in position. Plans should not be relied on. Interested parties should make and rely on their own enquiries.