



54 Boomerang Road Springwood NSW

4 3 2

LOCATION - This executive style residence is conveniently positioned with spectacular proximity to everything Springwood has to offer, being only a couple of minutes' drive to the village and its community, the train station with its free and ample all day commuter parking, as well as many local schools. It is just a stone's throw from the beautiful Birdwood Gully bushwalk, and quietly tucked away in an almost private little loop at the end of a very desirable street boasting a leafy outlook and bush views. You may think you are in the bush, but actually very close to all amenities and transport.

STYLE - As soon as you enter the home you are greeted with an abundance of natural light. Open plan living provides seamless transition between kitchen and dining

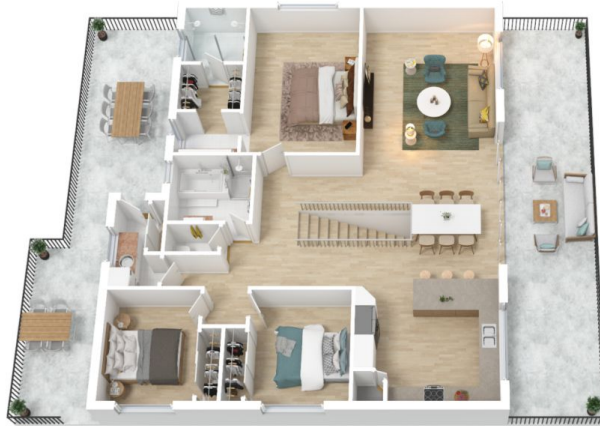
[For full version visit the website](https://www.chapmanrealestate.com.au)

Type : House
Land Size : 522 sqm
View : <https://www.chapmanrealestate.com.au/sale/nsw/hawkesbury/springwood/residential/home/7172335>



Kate Spence
02 4739 6200

54 BOOMERANG ROAD, SPRINGWOOD



First Floor



Ground Floor

INTERNAL
224 m²

EXTERNAL
78 m²

TOTAL
302 m²

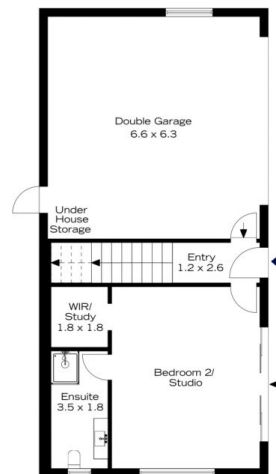


The floor plan is not to scale; measurements are indicative and in metres. All features included in this 3D plan are for inspiration purposes only. This is not an exact replica of the property or the position of exterior elements. Plans should not be relied on. Interested parties should make and rely on their own enquiries.

54 BOOMERANG ROAD, SPRINGWOOD



First Floor



Ground Floor

INTERNAL
224 m²

EXTERNAL
78 m²

TOTAL
302 m²



The floor plan is not to scale; measurements are indicative and in metres. Exterior elements are not in position. Plans should not be relied on. Interested parties should make and rely on their own enquiries.