

18 Eastlea Avenue Springwood NSW

4 2 1

LOCATION- Overlooking a peaceful bush backdrop in a popular location, 450m to Springwood Aquatic Centre and Buttenshaw park. Just 2.2km to Springwood village and conveniently located to local high school and primary school.

STYLE- A warm and inviting single level brick home with tile roof overlooking a private and sunny 1050m² block.

LAYOUT- Spacious lounge room with dining, central kitchen as well as an additional dining space or small family room, four bedrooms master features a renovated ensuite, walk in robe and private balcony, neat and tidy main bathroom with separate toilet, internal laundry.

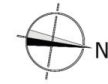
FEATURES - Large windows throughout allowing for loads of natural light, split system A/C, freshly painted, carpet and

Price : \$ 902,000
Land Size : 1050 sqm
View : <https://www.chapmanrealestate.com.au/sale/nsw/hawkesbury/springwood/residential/home/7168618>



Jonathan Crisp
02 4751 8266

18 EASTLEA AVENUE, SPRINGWOOD



INTERNAL
143 m²

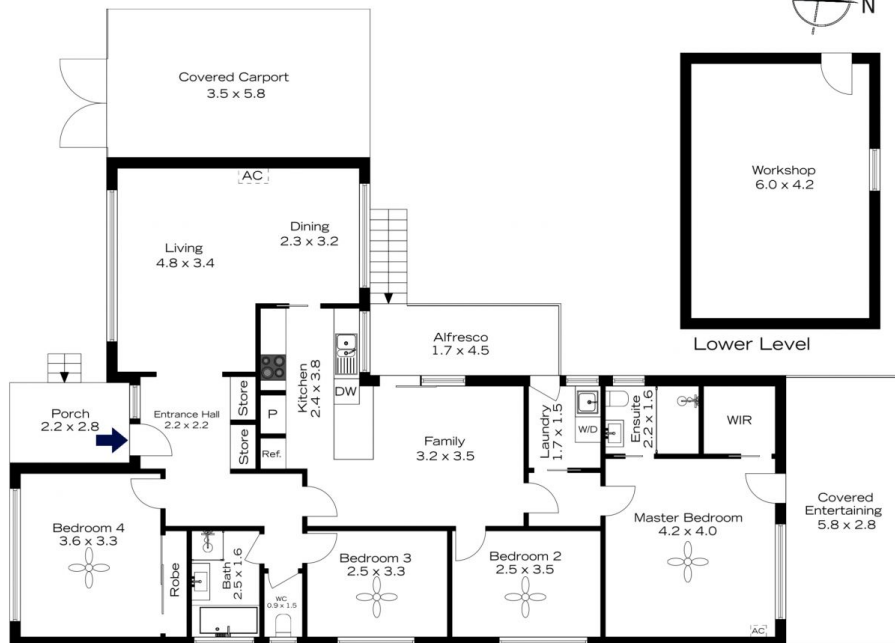
EXTERNAL
45 m²

TOTAL
188 m²



The floor plan is not to scale; measurements are indicative and in metres. All features included in this 3D plan are for inspiration purposes only. This is not an exact replica of the property or the position of exterior elements. Plans should not be relied on. Interested parties should make and rely on their own enquiries.

18 EASTLEA AVENUE, SPRINGWOOD



Ground Level

INTERNAL
143 m²

EXTERNAL
45 m²

TOTAL
188 m²



The floor plan is not to scale; measurements are indicative and in metres. Exterior elements are not in position. Plans should not be relied on. Interested parties should make and rely on their own enquiries.