



36 Yoogali Terrace Blaxland NSW

4 2 2

LOCATION - This home is located a stone's throw from Old Bathurst Road, giving you a quick and easy route straight down the mountain into Emu Plains and Penrith. There are shops, schools, public transport, cafes and bush walks all within close proximity of this stylish 4-bedroom home.

STYLE - This gorgeous home has new carpet throughout, as well as a lovely neutral colour palette. There are exposed brick walls in the main living spaces, as well as in the master bedroom and upstairs bedrooms. The house is awash with natural light, with floor-to-ceiling windows in the bedrooms and upstairs observatory, giving a spectacular view over the rear garden.

LAYOUT - This beautiful four-bedroom family home offers

[For full version visit the website](https://www.chapmanrealestate.com.au/sale/nsw/blue-mountains-surrounds/blaxland/residential/house/7161617)

Type : House
Price : \$ 1,245,000
Land Size : 713 sqm
View : <https://www.chapmanrealestate.com.au/sale/nsw/blue-mountains-surrounds/blaxland/residential/house/7161617>



Kate Spence
02 4739 6200

36 YOOGALI TERRACE, BLAXLAND



INTERNAL
161 m²

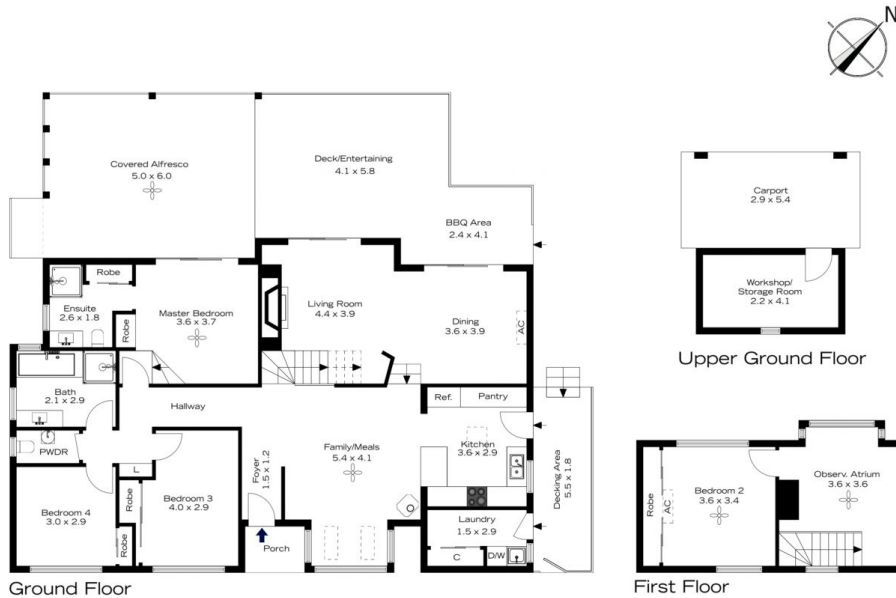
EXTERNAL
79 m²

TOTAL
240 m²



The floor plan is not to scale; measurements are indicative and in metres. All features included in this 3D plan are for inspiration purposes only. This is not an exact replica of the property or the position of exterior elements. Plans should not be relied on. Interested parties should make and rely on their own enquiries.

36 YOOGALI TERRACE, BLAXLAND



INTERNAL
161 m²

EXTERNAL
79 m²

TOTAL
240 m²



The floor plan is not to scale; measurements are indicative and in metres. Exterior elements are not in position. Plans should not be relied on. Interested parties should make and rely on their own enquiries.