



69 Highland Street Leura NSW

3 1 1

LOCATION - Enjoy the peaceful setting in this popular Mountains location, close to Leura Mall, local schools, parks, rail & world class Blue Mountains bushwalks.

STYLE - Single level brick & tile home with off street parking set on a 691 m2 (approx.) corner block with dual street frontage.

LAYOUT - 3 good sized bedrooms, open plan kitchen and dining which has a nice connection to the lounge area. There is an internal laundry and large outdoor undercover entertaining area.

FEATURES - If you are looking for peace and quiet, this is the place to be. Situated on a sunny and elevated corner

Type : House
Price : \$ 747,000
Land Size : 690 sqm
View : <https://www.chapmanrealestate.com.au/sale/nsw/blue-mountains-surrounds/leura/residential/house/7161608>

[For full version visit the website](#)



Chris Rayner
02 4739 6200



Hayley Clifton
02 4782 5045

69 HIGHLAND STREET, LEURA

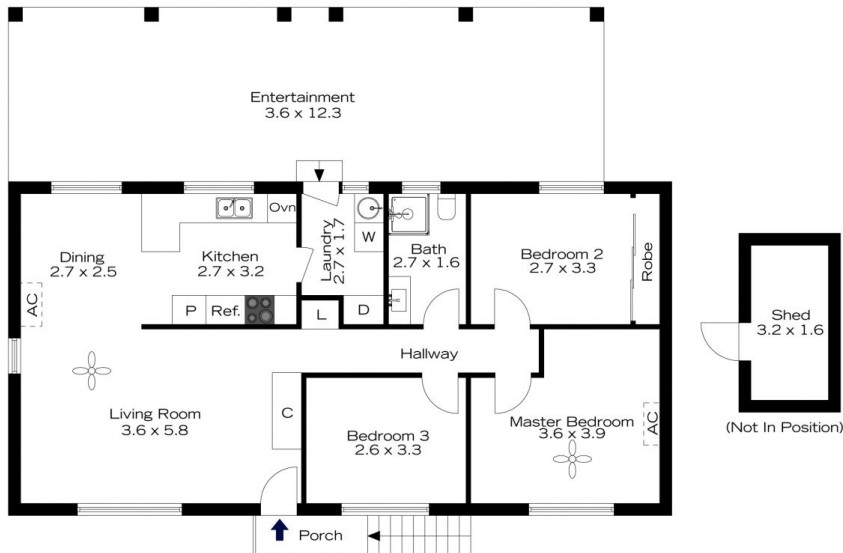


INTERNAL
84 m²
EXTERNAL
45 m²
TOTAL
129 m²



The floor plan is not to scale; measurements are indicative and in metres. All features included in this 3D plan are for inspiration purposes only. This is not an exact replica of the property or the position of exterior elements. Plans should not be relied on. Interested parties should make and rely on their own enquiries.

69 HIGHLAND STREET, LEURA



INTERNAL
84 m²
EXTERNAL
45 m²
TOTAL
129 m²



The floor plan is not to scale; measurements are indicative and in metres. Exterior elements are not in position. Plans should not be relied on. Interested parties should make and rely on their own enquiries.