



29 Sunland Crescent Mount Riverview NSW

4 2 2

LOCATION - Situated in a leafy & peaceful enclave of Mt Riverview, yet within approximately 1km to the well-known and much-loved primary school, day care, kids' playground, bush walks, & local supermarket.

STYLE - North facing, single level, brick & clad cottage with tile roof (newly restored), nestled on a manageable block of approximately 715sqm. Set back from the street offering a sense of privacy and seclusion. An ideal family home enjoying mature gardens with a focus on natives, a beautiful bush aspect to rear - abundant with local wildlife and filtered views of lights from the plains in the evening.

LAYOUT - Easy living floor plan, comprised of a north facing, sun-lit living room and a second living area at the back. 3 bedrooms with built in robes + a master suite of generous proportions with air conditioning, custom study

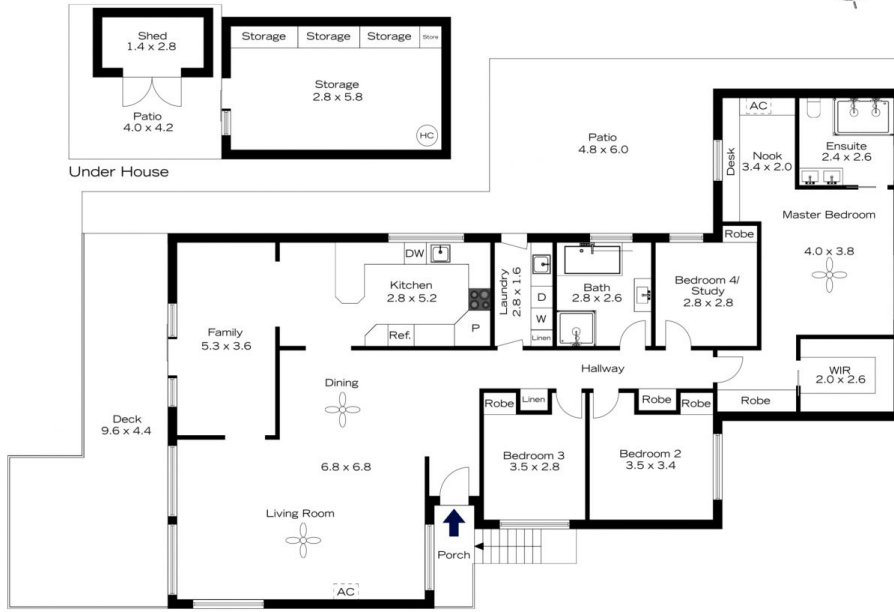
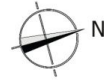
Type : House
Price : \$ 1,200,000
Land Size : 708.2 sqm
View : <https://www.chapmanrealestate.com.au/sale/nsw/hawkesbury/mount-riverview/residential/house/7161607>



Rachel Power
02 4739 4311

[For full version visit the website](https://www.chapmanrealestate.com.au)

29 SUNLAND CRESCENT, MOUNT RIVERVIEW



INTERNAL
168 m²

EXTERNAL
83 m²

TOTAL
251 m²



The floor plan is not to scale; measurements are indicative and in metres. Exterior elements are not in position. Plans should not be relied on. Interested parties should make and rely on their own enquiries.

29 SUNLAND CRESCENT, MOUNT RIVERVIEW



INTERNAL
168 m²

EXTERNAL
83 m²

TOTAL
251 m²



The floor plan is not to scale; measurements are indicative and in metres. All features included in this 3D plan are for inspiration purposes only. This is not an exact replica of the property or the position of exterior elements. Plans should not be relied on. Interested parties should make and rely on their own enquiries.