



12 Sassafras Gully Road Springwood NSW

4 🛏 2 🚿 1 🚗

LOCATION - Peacefully located yet only moments to the heart of bustling and sought after Springwood Village, within 1km of popular village shops, cafe's, restaurants, train & easy access to all community amenities, 2.4km to Springwood Public School, a mere 170m to bus and popular Sassafras Gully Track bush walk at the end of the street.

STYLE - Sitting behind a stone wall, this tranquil, unique European Chateau style two storey home is constructed of rendered brick on a concrete slab with colour bond roof on a flat and usable block size of approximately 916m² showcasing immaculate landscaped gardens and boasting European style courtyards with stunning ornamental grapevines over the hardwood pergola.

LAYOUT - 4 living spaces, downstairs impressive

Type : House
Price : \$ 1,530,027
Land Size : 916.9 sqm
View : <https://www.chapmanrealestate.com.au/sale/nsw/hawkesbury/springwood/residential/house/7161597>



Helen Harris
02 4751 8266

[For full version visit the website](#)

<https://www.chapmanrealestate.com.au>

12 SASSAFRAS GULLY ROAD, SPRINGWOOD



Ground Floor

First Floor

INTERNAL
230 m²

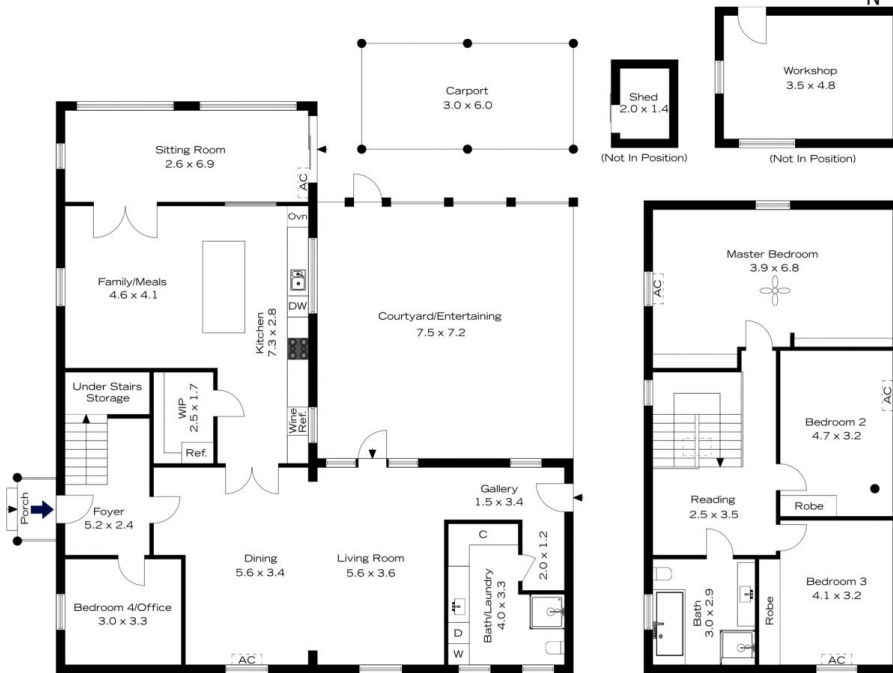
EXTERNAL
55 m²

TOTAL
285 m²



The floor plan is not to scale; measurements are indicative and in metres. All features included in this 3D plan are for inspiration purposes only. This is not an exact replica of the property or the position of exterior elements. Plans should not be relied on. Interested parties should make and rely on their own enquiries.

12 SASSAFRAS GULLY ROAD, SPRINGWOOD



Ground Floor

First Floor

INTERNAL
230 m²

EXTERNAL
55 m²

TOTAL
285 m²



The floor plan is not to scale; measurements are indicative and in metres. Exterior elements are not in position. Plans should not be relied on. Interested parties should make and rely on their own enquiries.