



6 Birdwood Parade Hazelbrook NSW

2 1 1

LOCATION - This lovely cottage home is located in a great spot, only 2.6km from school, 850m from the railway station, and 700m from the local shopping village. Access to an array of beautiful bush walks is on offer, as well as a short commute to both Springwood Village and Katoomba CBD. Gloria Park is a short stroll from the house with tennis courts, oval and kids play area.

STYLE - Light and airy, this delightful property has been given a contemporary makeover, with a beautifully upgraded kitchen with 900mm stove and stylish living areas. Painted white throughout, this home is a blank canvas, suited to an array of personal stylistic choices. With wooden flooring throughout, and large picture windows capturing the surrounding greenery, this property

[For full version visit the website](https://www.chapmanrealestate.com.au)

Type : House
Price : \$ 780,245
Land Size : 914 sqm
View : <https://www.chapmanrealestate.com.au/sale/nsw/blue-mountains-surrounds/hazelbrook/residential/house/7161583>



Kate Spence
02 4739 6200

6 BIRDWOOD AVENUE, HAZELBROOK



INTERNAL
90 m²

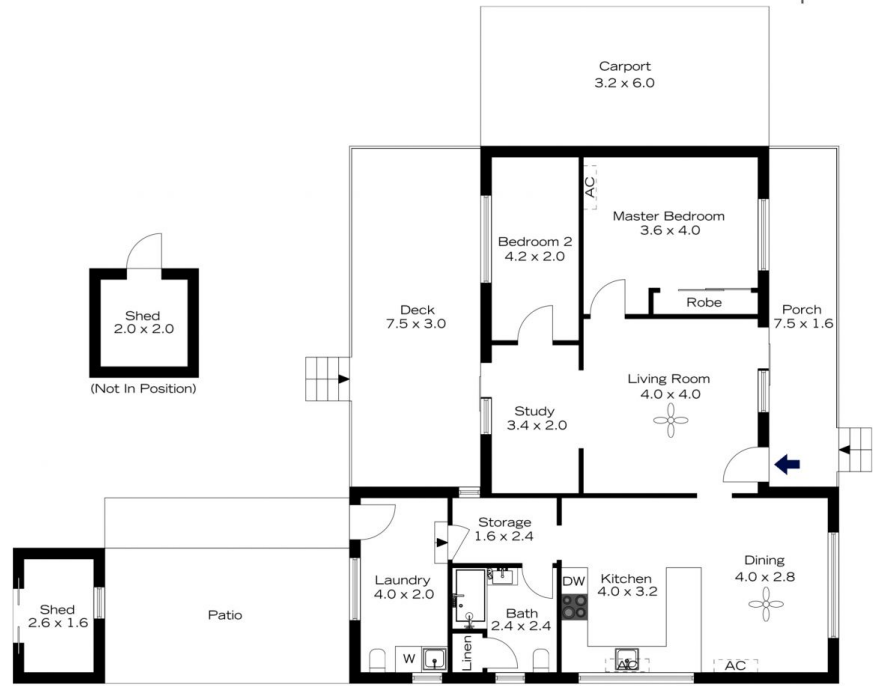
EXTERNAL
81 m²

TOTAL
171 m²



The floor plan is not to scale; measurements are indicative and in metres. All features included in this 3D plan are for inspiration purposes only. This is not an exact replica of the property or the position of exterior elements. Plans should not be relied on. Interested parties should make and rely on their own enquiries.

6 BIRDWOOD AVENUE, HAZELBROOK



INTERNAL
90 m²

EXTERNAL
81 m²

TOTAL
171 m²



The floor plan is not to scale; measurements are indicative and in metres. Exterior elements are not in position. Plans should not be relied on. Interested parties should make and rely on their own enquiries.