



70 Paterson Road Springwood NSW

6 3 2

LOCATION - Renowned as one of Springwood's very best streets. Peaceful and private enclave, backing to magical bushland and set on an expansive 2101 m2 (approx.) parcel and enjoying a north facing read. Close to golf course and club, bush walks, lookouts, bus, schools, and ovals.

STYLE - Generously proportioned exquisite family mansion with gorgeous bushland outlook. Built to a magnificent scale with elegant, sunlit interiors, offering the perfect Blue Mountains lifestyle.

LAYOUT - 4 living rooms, 6 bedrooms (all with built-ins), large office, master suite with walk in robe and generous ensuite with spa. 3 bathrooms overall, huge fitted laundry. Downstairs includes a kitchenette, giving you the option to use as a granny flat/ 2nd accommodation.

[For full version visit the website](#)

Type : House
Land Size : 2101 sqm
View : <https://www.chapmanrealestate.com.au/sale/nsw/hawkesbury/springwood/residential/house/7161582>

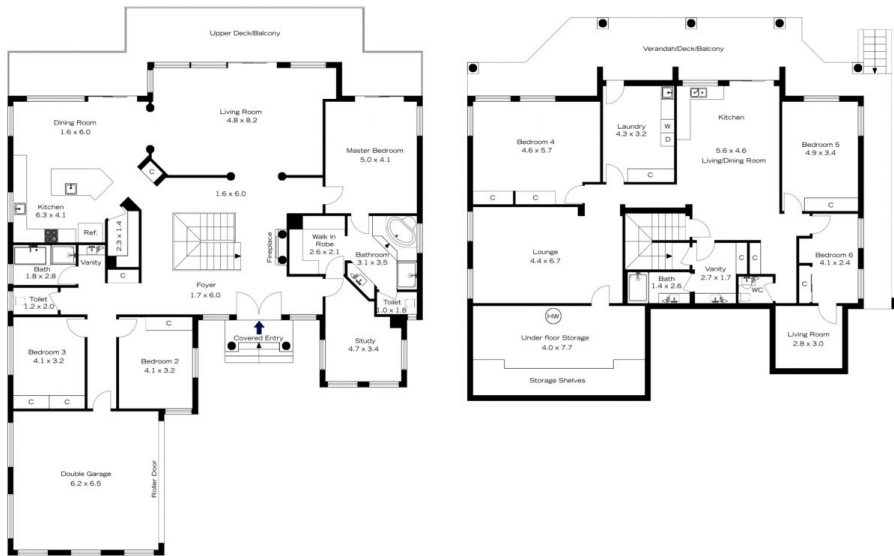


Milton Player
02 4739 4311



Sharon Lampert
02 4739 4311

70 PATERSON ROAD, SPRINGWOOD



INTERNAL
503 m²

EXTERNAL
105 m²

TOTAL
608 m²



The floor plan is not to scale; measurements are indicative and in metres. Exterior elements are not in position. Plans should not be relied on. Interested parties should make and rely on their own enquiries.

70 PATERSON ROAD, SPRINGWOOD



INTERNAL
503 m²

EXTERNAL
105 m²

TOTAL
608 m²



The floor plan is not to scale; measurements are indicative and in metres. All features included in this 3D plan are for inspiration purposes only. This is not an exact replica of the property or the position of exterior elements. Plans should not be relied on. Interested parties should make and rely on their own enquiries.