



### 19 Wilson Street Lawson NSW

3 2 1

**LOCATION** - This outstanding property is situated in a great street with ready access to the Great Western Highway. Schools, Railway Station, cafes, parks, bush walks and more are right on your doorstep in this fantastic area.

**STYLE** - This superb home is packed with character. Freshly painted inside and out, and boasting two renovated bathrooms, this home combines mountain charm with a modern aesthetic and ten-foot ceilings. There are two fireplaces, with the living room fireplace a centrepiece of the home and the perfect way to warm the family through the winter months. Three natural gas heaters assist to heat every corner of this home. The windows are timber-framed with leadlight glass adding to the character of the property.

**Type** : House  
**Price** : \$ 980,000  
**Land Size** : 767 sqm  
**View** : <https://www.chapmanrealestate.com.au/sale/nsw/blue-mountains-surrounds/lawson/residential/house/7161575>

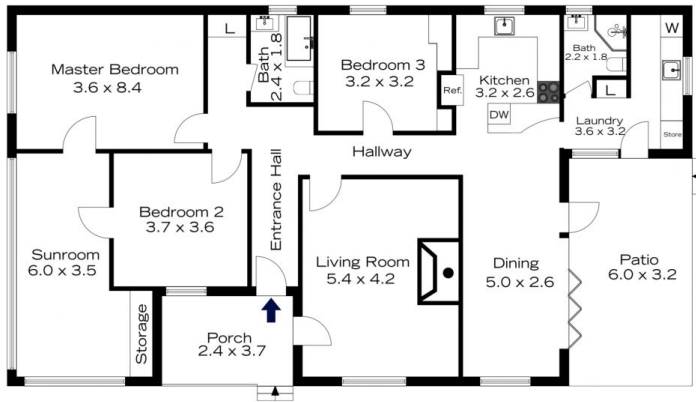


**Kate Spence**  
02 4739 6200

[For full version visit the website](https://www.chapmanrealestate.com.au)

<https://www.chapmanrealestate.com.au>

# 19 WILSON STREET, LAWSON



**INTERNAL**  
144 m<sup>2</sup>

**EXTERNAL**  
29 m<sup>2</sup>

**TOTAL**  
173 m<sup>2</sup>



The floor plan is not to scale; measurements are indicative and in metres. Exterior elements are not in position. Plans should not be relied on. Interested parties should make and rely on their own enquiries.

# 19 WILSON STREET, LAWSON



**INTERNAL**  
144 m<sup>2</sup>

**EXTERNAL**  
29 m<sup>2</sup>

**TOTAL**  
173 m<sup>2</sup>



The floor plan is not to scale; measurements are indicative and in metres. All features included in this 3D plan are for inspiration purposes only. This is not an exact replica of the property or the position of exterior elements. Plans should not be relied on. Interested parties should make and rely on their own enquiries.