



6 Bush Place Glenbrook NSW

4 2 3

LOCATION - Backing to bushland and nestled at the end of a small culdesac, within a walk to bush walks, National Park, rail and beloved Glenbrook Village. Short drive or bike ride to the famous Jelly Been pools and lookouts. Great size block approx 1151m2

STYLE - 2 storey brick and tile home with gorgeous bush outlook. Perfect for renovation, re-configuration (loads of scope downstairs to create extra rooms (stca), extension, etc.

LAYOUT - 2 living rooms, 4 bedrooms, study, 2 with built-ins, modern bathroom and 2nd downstairs, large laundry.

FEATURES - Open plan kitchen, ducted air (upstairs), plus split system, jarrah timber floorboards, carpet, ceiling fans, loads of cupboards, front balcony with view, multiple

Type : House
Price : \$ 1,040,000
Land Size : 1151 sqm
View : <https://www.chapmanrealestate.com.au/sale/nsw/blue-mountains-surrounds/glenbrook/residential/house/7161573>



Milton Player
02 4739 4311

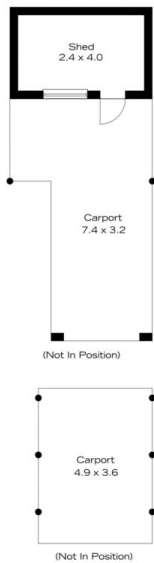


Sharon Lampert
02 4739 4311

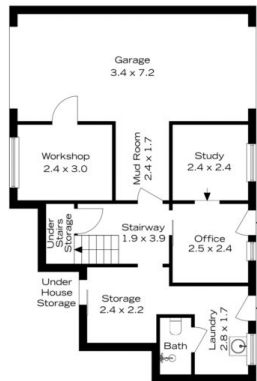
[For full version visit the website](https://www.chapmanrealestate.com.au)

<https://www.chapmanrealestate.com.au>

6 BUSH PLACE, GLENBROOK



Ground Floor



Lower Ground Floor



INTERNAL
188 m²

EXTERNAL
17 m²

TOTAL
205 m²



The floor plan is not to scale; measurements are indicative and in metres. Exterior elements are not in position. Plans should not be relied on. Interested parties should make and rely on their own enquiries.

6 BUSH PLACE, GLENBROOK



Ground Floor



Lower Ground Floor

INTERNAL
188 m²

EXTERNAL
17 m²

TOTAL
205 m²



The floor plan is not to scale; measurements are indicative and in metres. All features included in this 3D plan are for inspiration purposes only. This is not an exact replica of the property or the position of exterior elements. Plans should not be relied on. Interested parties should make and rely on their own enquiries.