



6 Queens View Crescent Lawson NSW

6 2 2

LOCATION - Overlooking picturesque bush view, moments from either Lawson and Hazelbrook village featuring an assortment of cafés, restaurants and other specialty stores. With plenty of options for outdoor activities, Lawson offers a variety of walking tracks, off leash dog park and aquatic centre.

STYLE - A expansive, double story brick residence, high set on a sunny and usable 893 m2 block. This home features the unique opportunity to expand on the already large home, with DA approved plans for a 2 bedroom granny flat.

LAYOUT - A large entry leading to a generous open plan living, dining which flows through to the kitchen and family room. The kitchen overlooks a wonderful paved entertaining area and the fully fenced rear yard. Up-stairs

Price : \$ 1,190,000
Land Size : 894 sqm
View : <https://www.chapmanrealestate.com.au/sale/nsw/blue-mountains-surrounds/lawson/residential/house/7161570>



Jonathan Crisp
02 4751 8266



Hayley Clifton
02 4782 5045

6 QUEENS VIEW CRESCENT, LAWSON



First Floor

INTERNAL
224 m²

EXTERNAL
3 m²

TOTAL
227 m²

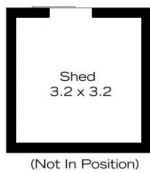
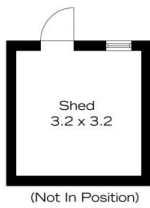


Ground Floor



The floor plan is not to scale; measurements are indicative and in metres. All features included in this 3D plan are for inspiration purposes only. This is not an exact replica of the property or the position of exterior elements. Plans should not be relied on. Interested parties should make and rely on their own enquiries.

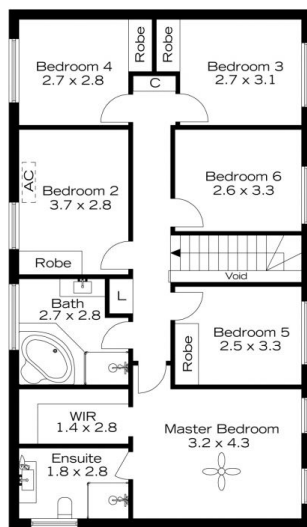
6 QUEENS VIEW CRESCENT, LAWSON



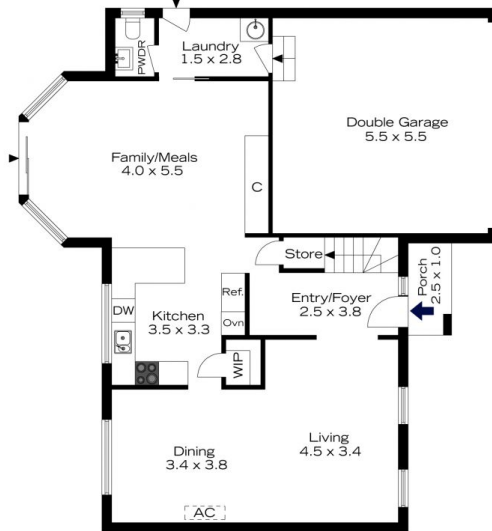
INTERNAL
224 m²

EXTERNAL
3 m²

TOTAL
227 m²



First Floor



Ground Floor



The floor plan is not to scale; measurements are indicative and in metres. Exterior elements are not in position. Plans should not be relied on. Interested parties should make and rely on their own enquiries.