



### 16 Derain Crescent Hazelbrook NSW

4 2 2

**LOCATION** - Located within 1km of Hazelbrook village and train station, with an abundance of local parks, bush walks and trails all within moments from your door step. Multiple options of local schools and day cares with bus stop just 300m away.

**STYLE** - A well-presented single level brick home with functional open plan living.

**LAYOUT** - Flowing open plan living incorporating the lounge and dining area with a huge covered alfresco, four generous bedrooms all with built in robes, master features a renovated ensuite with spa bath, neat and tidy main bathroom and internal laundry.

**FEATURES** - Modern kitchen with lots of usable storage, stainless steel appliance and gas cooking, timber floating

**Price** : \$ 870,000  
**Land Size** : 700 sqm  
**View** : <https://www.chapmanrealestate.com.au/sale/nsw/blue-mountains-surrounds/hazelbrook/residential/house/7161569>



**Jonathan Crisp**  
02 4751 8266

# 16 DERAIN CRESCENT, HAZELBROOK

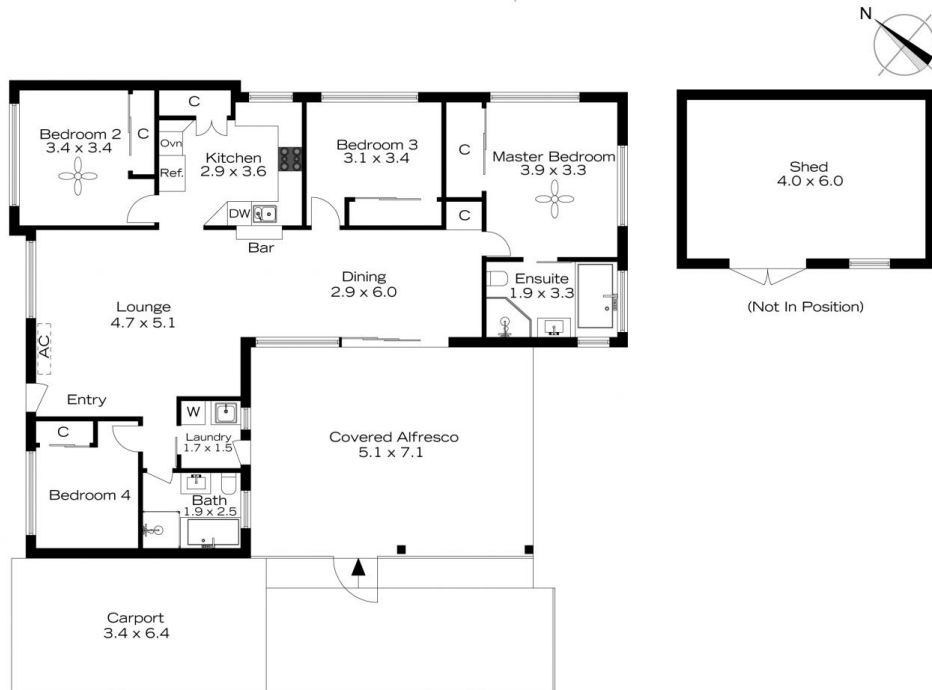


**INTERNAL**  
130 m<sup>2</sup>  
**EXTERNAL**  
38 m<sup>2</sup>  
**TOTAL**  
168 m<sup>2</sup>



The floor plan is not to scale; measurements are indicative and in metres. All features included in this 3D plan are for inspiration purposes only. This is not an exact replica of the property or the position of exterior elements. Plans should not be relied on. Interested parties should make and rely on their own enquiries.

# 16 DERAIN CRESCENT, HAZELBROOK



**INTERNAL**  
130 m<sup>2</sup>  
**EXTERNAL**  
38 m<sup>2</sup>  
**TOTAL**  
168 m<sup>2</sup>



The floor plan is not to scale; measurements are indicative and in metres. Exterior elements are not in position. Plans should not be relied on. Interested parties should make and rely on their own enquiries.