



25 Shirlow Avenue Faulconbridge NSW

2 2

LOCATION - Peacefully located backing bush on a large block, 950m to rail and convenient to local schools, parks and bushwalks.

STYLE - Two storey renovated home of rendered brick veneer construction and colourbond roof with separate studio.

LAYOUT - Light filled open plan living room flowing through dining space to alfresco entertaining, two upstairs bedrooms including main with walk in wardrobe and ensuite, downstairs has two utility rooms plus study nook currently configured as a 3rd bedroom and sitting room with spacious 2nd bathroom combined laundry.

FEATURES - Renovated open plan kitchen with large walk in pantry, dishwasher and gorgeous island breakfast bar, 2 x reverse cycle air conditioners, floating floors, solar

Type : House
Price : \$ 906,500
Land Size : 1714 sqm
View : <https://www.chapmanrealestate.com.au/sale/nsw/hawkesbury/faulconbridge/residential/house/7161567>



Mark Poole
02 4751 8266

[For full version visit the website](https://www.chapmanrealestate.com.au)

<https://www.chapmanrealestate.com.au>

25 SHIRLOW AVENUE, FAULCONBRIDGE

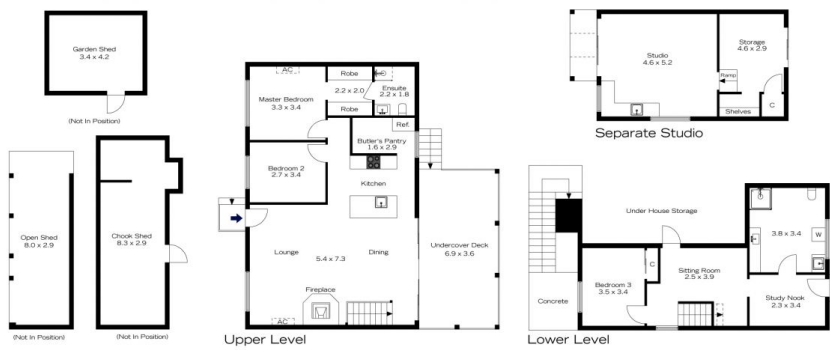


INTERNAL
147 m²
EXTERNAL
33 m²
TOTAL
180 m²



The floor plan is not to scale; measurements are indicative and in metres. All features included in this 3D plan are for inspiration purposes only. This is not an exact replica of the property or the position of exterior elements. Plans should not be relied on. Interested parties should make and rely on their own enquiries.

25 SHIRLOW AVENUE, FAULCONBRIDGE



INTERNAL
147 m²
EXTERNAL
33 m²
TOTAL
180 m²



The floor plan is not to scale; measurements are indicative and in metres. Exterior elements are not in position. Plans should not be relied on. Interested parties should make and rely on their own enquiries.