



### 10/5-6 Ferguson Road Springwood NSW

2 1 1

**LOCATION:** This perfectly located unit is literally 400m to Springwood station along with the cafes, restaurants, boutique shops and amenities that Springwood village has to offer.

**STYLE:** Brick and tile complex. Unit is in immaculate condition with a contemporary feel and layout.

**LAYOUT:** Combined living dining room, 2 bedrooms, master with built-in wardrobe, and a well-appointed kitchen.

**FEATURES:** Recently renovated kitchen with electric cooking offering plenty of cupboard space with adjoining internal laundry, as well as a very neat and tidy bathroom with separate bath and shower. Fully carpeted throughout with fresh interiors, reverse cycle air conditioning, and a cute undercover balcony. This unit also offers a secure lock-up car space.

**Type** : Unit  
**Price** : \$ 475,000  
**Building Size** : 75.5 sqm  
**Land Size** : 101 sqm  
**View** : <https://www.chapmanrealestate.com.au/sale/nsw/hawkesbury/springwood/residential/unit/7161560>

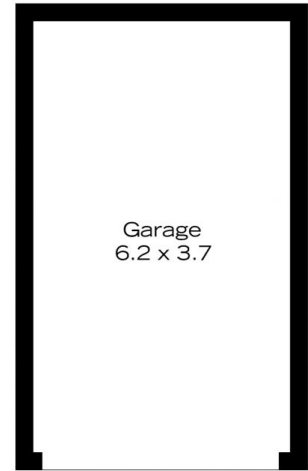
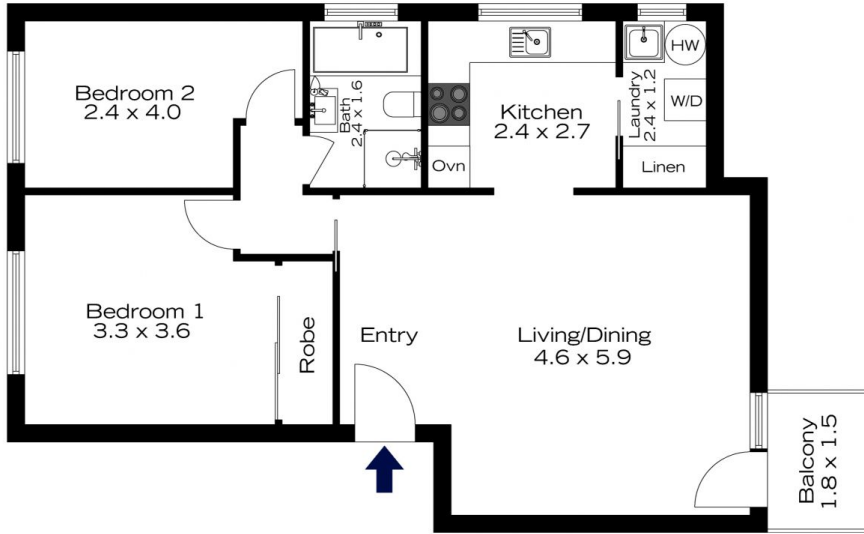


**Sharon Lampert**  
02 4720 4244

[For full version visit the website](https://www.chapmanrealestate.com.au)

<https://www.chapmanrealestate.com.au>

# 10/5-6 FERGUSON RD, SPRINGWOOD



**INTERNAL**  
74 m<sup>2</sup>  
**EXTERNAL**  
3 m<sup>2</sup>  
**TOTAL**  
77 m<sup>2</sup>



The floor plan is not to scale; measurements are indicative and in metres. Exterior elements are not in position. Plans should not be relied on. Interested parties should make and rely on their own enquiries.

# 10/5-6 FERGUSON RD, SPRINGWOOD



**INTERNAL**  
74 m<sup>2</sup>  
**EXTERNAL**  
3 m<sup>2</sup>  
**TOTAL**  
77 m<sup>2</sup>



The floor plan is not to scale; measurements are indicative and in metres. All features included in this 3D plan are for inspiration purposes only. This is not an exact replica of the property or the position of exterior elements. Plans should not be relied on. Interested parties should make and rely on their own enquiries.