

4 Catalpa Avenue Blaxland NSW

4 2 2

LOCATION - This stunning residence is set in one of Blaxland's best streets, and is only a short stroll to rail services, shops, restaurants, primary and pre-schools, park, supermarket and bus. Positioned in a whisper quiet cul-de-sac, this property is in location A for those looking for the perfect family home in one of the lower Blue Mountains' most sought after suburbs.

STYLE - This large family home is simply exquisite. Built in 2009, this home is a modern build with gorgeous inclusions throughout. The open plan main living area includes a built-in gas fireplace, and the kitchen is on point with a large island bench top, built-in wine storage, a six burner gas stove and a fully-recessed, below bench microwave. The winding staircase from the main entrance gives the

Type : House
Price : \$ 1,955,000
Land Size : 844 sqm
View : <https://www.chapmanrealestate.com.au/sale/nsw/blue-mountains-surrounds/blaxland/residential/house/7161551>

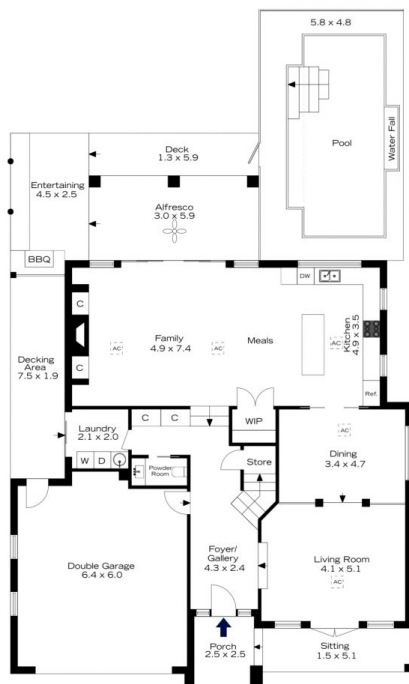


Kate Spence
02 4739 6200

[For full version visit the website](https://www.chapmanrealestate.com.au)

<https://www.chapmanrealestate.com.au>

4 CATALPA AVENUE, BLAXLAND



Ground Floor

INTERNAL
262 m²

EXTERNAL
115 m²

TOTAL
377 m²



The floor plan is not to scale; measurements are indicative and in metres. Exterior elements are not in position. Plans should not be relied on. Interested parties should make and rely on their own enquiries.

4 CATALPA AVENUE, BLAXLAND



Ground Floor

INTERNAL
262 m²

EXTERNAL
115 m²

TOTAL
377 m²



The floor plan is not to scale; measurements are indicative and in metres. All features included in this 3D plan are for inspiration purposes only. This is not an exact replica of the property or the position of exterior elements. Plans should not be relied on. Interested parties should make and rely on their own enquiries.