



## 15 Lee Road Winmalee NSW

3 1 2

**LOCATION** - Set in a convenient and peaceful location, this home is an easy walk to local shops, parks, bus and bush walks. Multiple high performing schools are within a 2km distance making this home an ideal place for the family.

**STYLE** - Single level home of brick construction with a tile roof. Homes like this really do offer opportunity to add further value.

**LAYOUT** - Generous lounge room with large windows loads natural light, good size dine-in kitchen and a nice connection to the bedrooms. The bedrooms down the hall are nice size and work easily with the flow of the home.

**FEATURES** - Initially the land size, established trees,

[For full version visit the website](#)

**Type** : House  
**Price** : \$ 888,888  
**Land Size** : 1226 sqm  
**View** : <https://www.chapmanrealestate.com.au/sale/nsw/hawkesbury/winmalee/residential/house/7161543>



**Chris Rayner**  
02 4739 6200

# 15 LEE ROAD, WINMALEE



**INTERNAL**  
85 m<sup>2</sup>

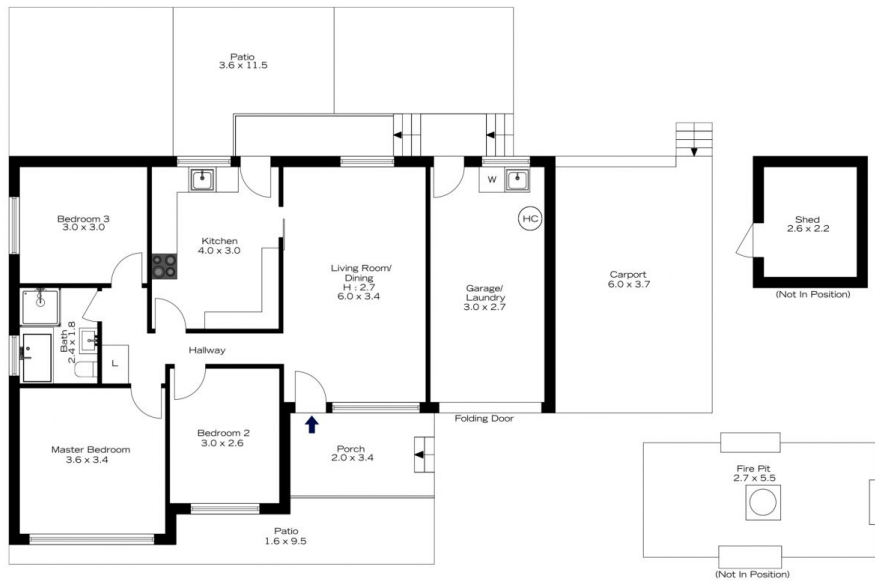
**EXTERNAL**  
79 m<sup>2</sup>

**TOTAL**  
164 m<sup>2</sup>



The floor plan is not to scale; measurements are indicative and in metres. All features included in this 3D plan are for inspiration purposes only. This is not an exact replica of the property or the position of exterior elements. Plans should not be relied on. Interested parties should make and rely on their own enquiries.

# 15 LEE ROAD, WINMALEE



**INTERNAL**  
85 m<sup>2</sup>

**EXTERNAL**  
79 m<sup>2</sup>

**TOTAL**  
164 m<sup>2</sup>



The floor plan is not to scale; measurements are indicative and in metres. Exterior elements are not in position. Plans should not be relied on. Interested parties should make and rely on their own enquiries.