



### 109 Chapman Parade Faulconbridge NSW

3 2 4

**LOCATION** - Beautifully positioned in a sought after Faulconbridge pocket with a peaceful bush outlook, bus stop metres away, within walking distance (1.7km) to local schools, 3.1km to train, easy access to highway, close to bush walks and moments to famous Norman Lindsay Gallery & Cafe.

**STYLE** - Contemporary style single level painted brick home with tile roof, side vehicle access, pool & studio, set beautifully on a huge, mainly level 1581m2 block with an impressive street appeal.

**LAYOUT** - Main house has two separate living areas, stunning main family living room which flows into open kitchen and dining, three bedrooms, all with built in robes and ceiling fans, updated main bathroom with skylight, feature tiles & separate toilet, generous laundry, separate

**Type** : House  
**Price** : \$ 1,181,186  
**Land Size** : 1581 sqm  
**View** : <https://www.chapmanrealestate.com.au/sale/nsw/hawkesbury/faulconbridge/residential/house/7161541>



**Helen Harris**  
02 4751 8266

[For full version visit the website](#)

# 109 CHAPMAN PARADE, FAULCONBRIDGE

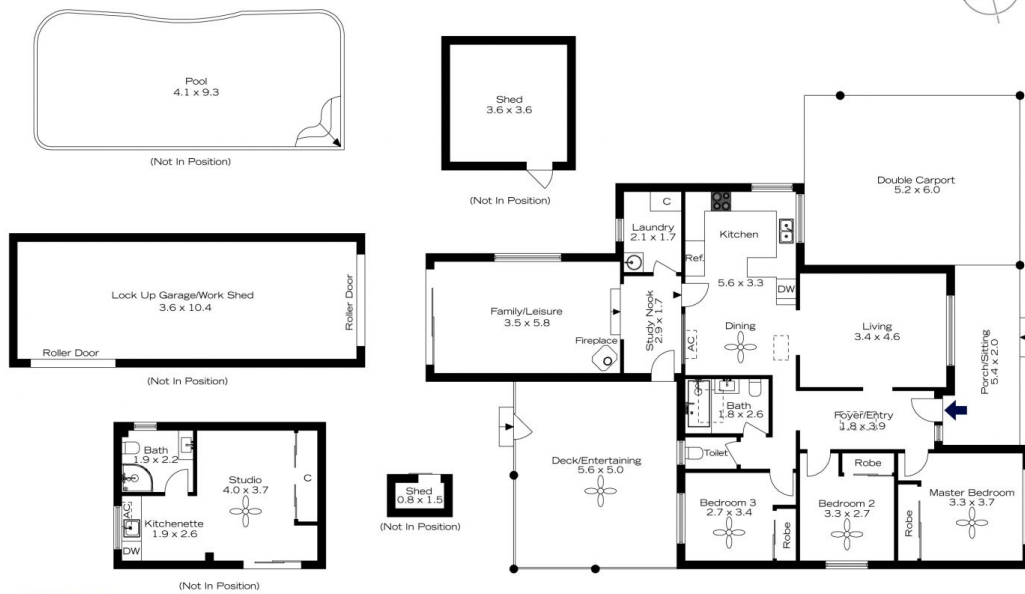


**INTERNAL**  
116 m<sup>2</sup>  
**EXTERNAL**  
75 m<sup>2</sup>  
**TOTAL**  
191 m<sup>2</sup>



The floor plan is not to scale; measurements are indicative and in metres. Exterior elements are not in position. Plans should not be relied on. Interested parties should make and rely on their own enquiries.

# 109 CHAPMAN PARADE, FAULCONBRIDGE



**INTERNAL**  
116 m<sup>2</sup>  
**EXTERNAL**  
75 m<sup>2</sup>  
**TOTAL**  
191 m<sup>2</sup>



The floor plan is not to scale; measurements are indicative and in metres. Exterior elements are not in position. Plans should not be relied on. Interested parties should make and rely on their own enquiries.