

53 Hillside Crescent Glenbrook NSW

4 1 1

LOCATION- Village side Glenbrook, easy access to Great Western Highway and M4, great access to Glenbrook village and all its popular lifestyle venues.

STYLE- Multi level brick/clad and tile home, level access from street and mostly level 650.2m2 fenced yard.

LAYOUT- 2 generous living rooms, separate dining, 4 bedrooms all with built-ins, main bathroom along with extra powder room, laundry and single carport.

FEATURES- Freshly painted throughout, timber floors, reverse-cycle air conditioning, great layout over 3 levels, large usable level block, rear deck of kitchen overlooking grassy yard, potential side access, join the real estate market in popular Glenbrook village side.

Price : \$ 950,000

Land Size : 650.2 sqm

View : <https://www.chapmanrealestate.com.au/sale/nsw/blue-mountains-surrounds/glenbrook/residential/house/7161540>

Disclaimer:

All information contained herein is gathered from sources we believe to be reliable. However, we cannot guarantee



Jonathan Crisp
02 4751 8266



Rachel Power
02 4739 4311

Internal Area : 154 sqm approx.
 External Area : 38 sqm approx.
 Total Area : 192 sqm approx.



Ground Floor

First Floor

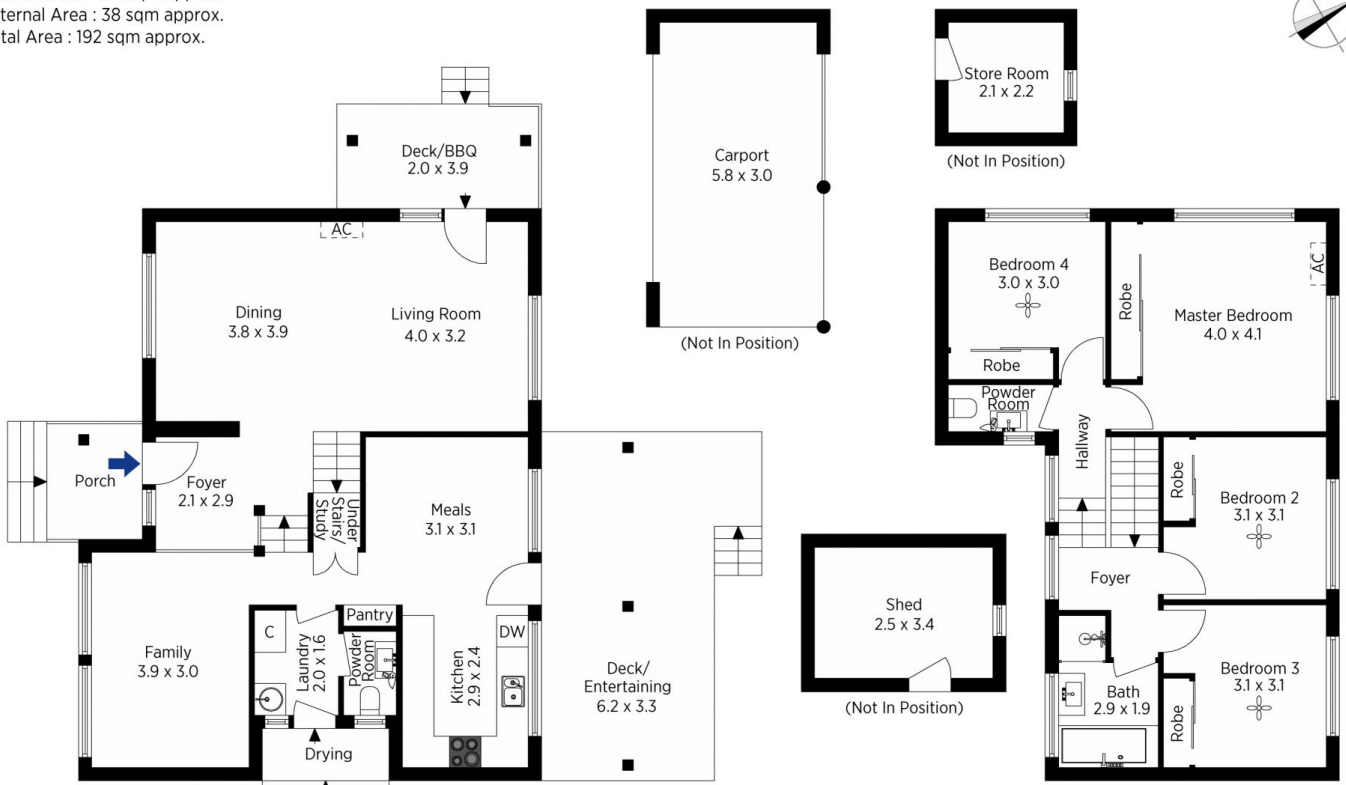
The floor plan is not to scale; measurements are indicative and in metres. All features included in this 3D plan are for inspiration purposes only. This is not an exact replica of the property or the position of exterior elements. Plans should not be relied on. Interested parties should make and rely on their own enquiries.

Produced by DIAKRIT

53 Hillside Crescent, Glenbrook

Chapman

Internal Area : 154 sqm approx.
 External Area : 38 sqm approx.
 Total Area : 192 sqm approx.



Ground Floor

First Floor

The floor plan is not to scale; measurements are indicative and in metres. Exterior elements are not in position. Plans should not be relied on. Interested parties should make and rely on their own enquiries.

Produced by DIAKRIT

53 Hillside Crescent, Glenbrook

Chapman