



212 Rusden Road Mount Riverview NSW

4 2 1

LOCATION- Sitting on a perfect block of land, this home is moments to Mount Riverview Public School and with Mount Riverview shops, day care, coffee shop, bus stop and parks all within 500m approx.

STYLE- Single level brick and tile home with enormous potential.

LAYOUT- Offering 3 good size bedrooms with an easy conversion to the option of having a 4th bedroom with a small renovation. Large living area and a good size dining off the kitchen.

FEATURES- Needing some updating throughout, this home offers enormous potential to add your own value.

[For full version visit the website](https://www.chapmanrealestate.com.au)

Type : House
Land Size : 1422 sqm
View : <https://www.chapmanrealestate.com.au/sale/nsw/hawkesbury/mount-riverview/residential/house/7161536>



Chris Rayner
02 4739 6200



Kate Spence
02 4739 6200

212 RUSDEN ROAD, MOUNT RIVERVIEW



INTERNAL
225 m²

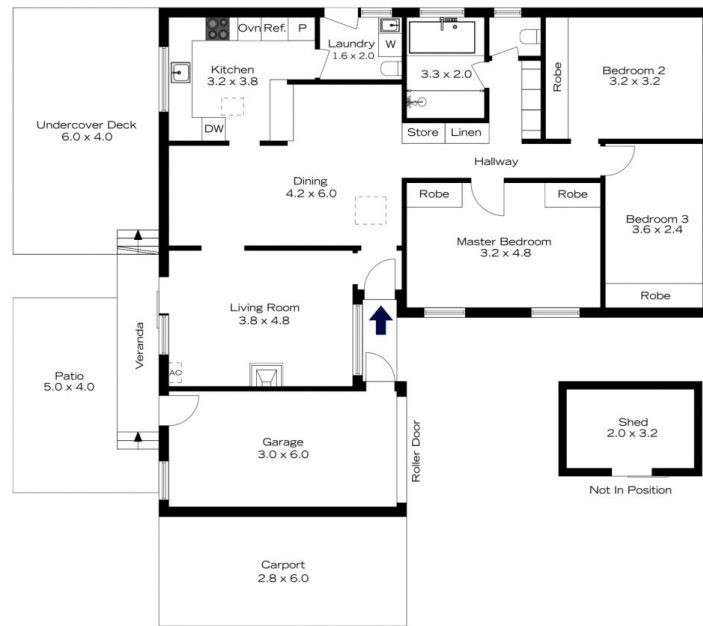
EXTERNAL
86 m²

TOTAL
311 m²



The floor plan is not to scale; measurements are indicative and in metres. All features included in this 3D plan are for inspiration purposes only. This is not an exact replica of the property or the position of exterior elements. Plans should not be relied on. Interested parties should make and rely on their own enquiries.

212 RUSDEN ROAD, MOUNT RIVERVIEW



INTERNAL
225 m²

EXTERNAL
86 m²

TOTAL
311 m²



The floor plan is not to scale; measurements are indicative and in metres. Exterior elements are not in position.
Plans should not be relied on. Interested parties should make and rely on their own enquiries.