

57 Hersey Street Blaxland NSW

3 1 2

LOCATION: Ideally located on the fringe of Blaxland and Glenbrook, enjoying close proximity (approx. 600m) to Lennox Park, and tennis courts, approximately 400m to Brooklands shopping centre and Lapstone Hotel, moments to Glenbrook Lagoon, local shops, parks, Glenbrook pool and high performing schools.

STYLE: With an abundance of Mountains cottage charm, this single level clad home sits on an approx 538m2 level block.

LAYOUT: This gorgeous property boasts light filled interiors, three bedrooms (all with built in robes) with a separate lounge & open plan kitchen leading to the dining room, family bathroom, home office.

FEATURES: Contemporary kitchen with plenty of cabinetry & bench space including breakfast bar seating, gas

Type : House
Price : \$ 975,000
Land Size : 538 sqm
View : <https://www.chapmanrealestate.com.au/sale/nsw/blue-mountains-surrounds/blaxland/residential/house/7161535>



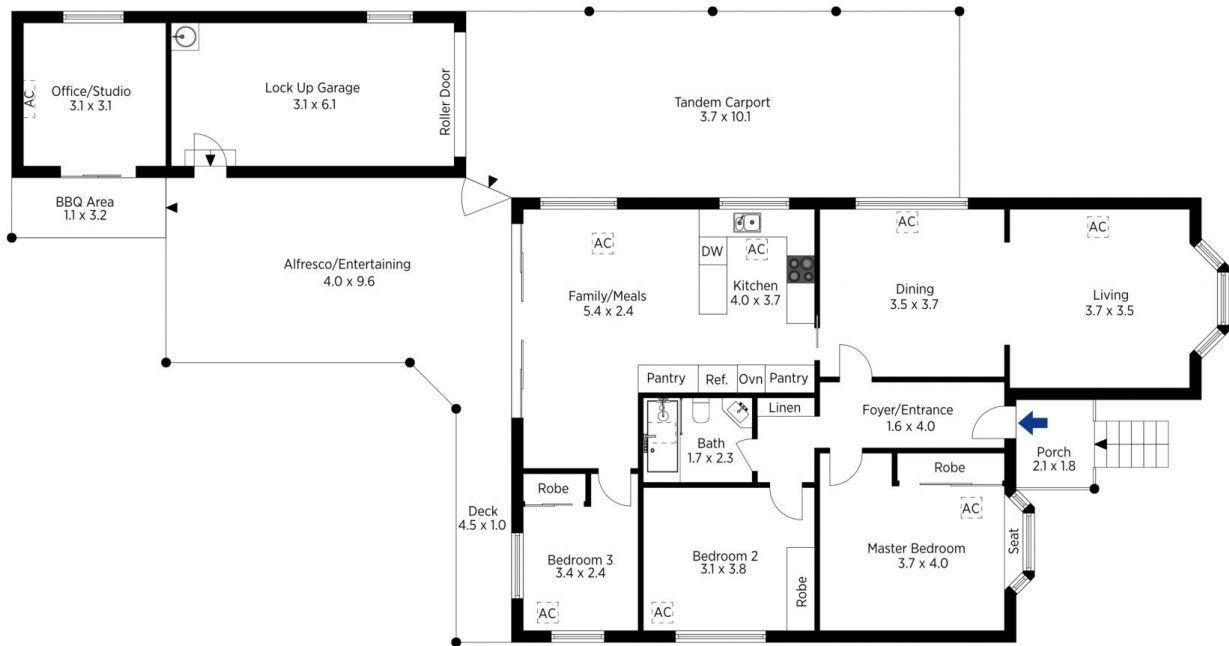
Sarah Watson
02 4739 4311



Kate Spence
02 4739 6200

[For full version visit the website](https://www.chapmanrealestate.com.au)

<https://www.chapmanrealestate.com.au>



The floor plan is not to scale; measurements are indicative and in metres. Exterior elements are not in position. Plans should not be relied on. Interested parties should make and rely on their own enquiries.

Produced by DIAKRIT

57 Hersey Street, Blaxland

Chapman



The floor plan is not to scale; measurements are indicative and in metres. All features included in this 3D plan are for inspiration purposes only. This is not an exact replica of the property or the position of exterior elements. Plans should not be relied on. Interested parties should make and rely on their own enquiries.

Produced by DIAKRIT

57 Hersey Street, Blaxland

Chapman