

10 Cherrywood Avenue Mount Riverview NSW

3 1 1

LOCATION - Prime position in a popular street easy access to schools, shop, bush walks and bus.

STYLE - High set single level brick and tile home positioned on a large and level 973.8 m2 landscaped block of land.

LAYOUT - Large L shaped lounge and dining, 3 bedrooms, full bathroom with separate toilet, single lock up garage and laundry.

FEATURES - Original condition and features throughout, extremely neat and tidy, new oven, fans, weather wall air conditioner, bathroom with shower and bath, linen x 2, loft storage in garage, side access could fit a vehicle, alfresco BBQ area, large level back yard ideal for family or large shed/granny flat (S.T.C.A).

Type : House
Price : \$ 980,108
Land Size : 973.8 sqm
View : <https://www.chapmanrealestate.com.au/sale/nsw/hawkesbury/mount-riverview/residential/house/7161532>



Jonathan Crisp
02 4751 8266



Glen Power
02 4739 4311

[For full version visit the website](https://www.chapmanrealestate.com.au)

<https://www.chapmanrealestate.com.au>

Internal Area : 101 sqm approx.
 External Area : 28 sqm approx.
 Total Area : 129 sqm approx.



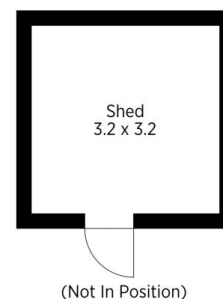
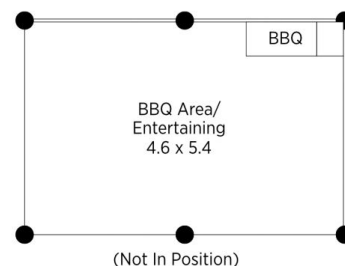
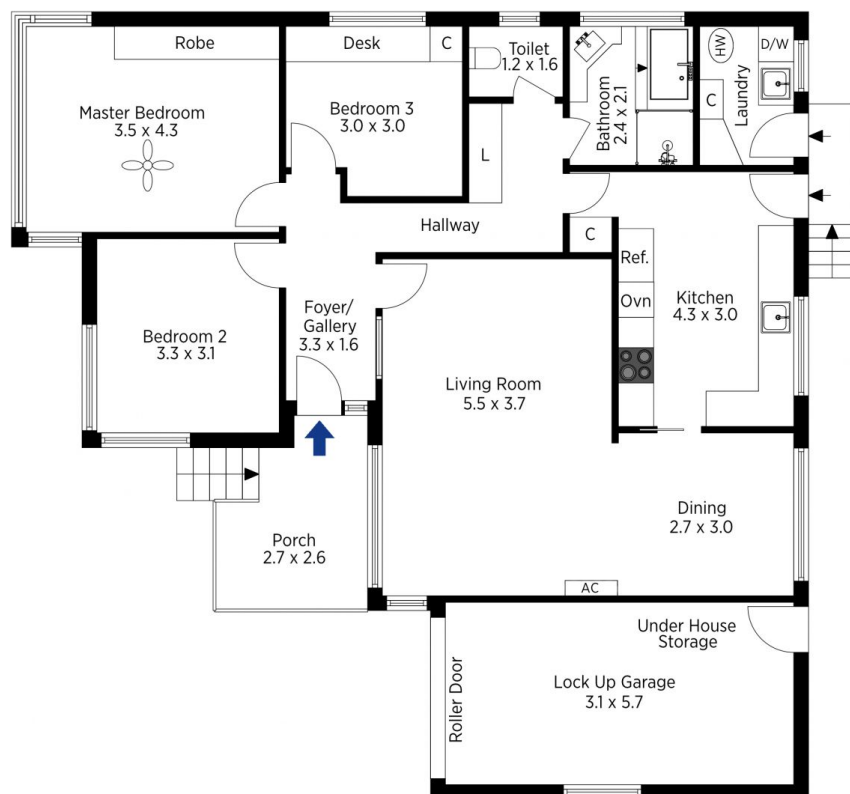
The floor plan is not to scale; measurements are indicative and in metres. All features included in this 3D plan are for inspiration purposes only. This is not an exact replica of the property or the position of exterior elements. Plans should not be relied on. Interested parties should make and rely on their own enquiries.

Produced by DIAKRIT

10 Cherrywood Avenue, Mount Riverview

Chapman

Internal Area : 101 sqm approx.
 External Area : 28 sqm approx.
 Total Area : 129 sqm approx.



The floor plan is not to scale; measurements are indicative and in metres. Exterior elements are not in position. Plans should not be relied on. Interested parties should make and rely on their own enquiries.

Produced by DIAKRIT

10 Cherrywood Avenue, Mount Riverview

Chapman