



## Wentworth Falls

3 1 3

**LOCATION** - Enjoy the serenity in this blue-chip location. This north facing freshly renovated property is tucked away on a blissfully quiet street in Wentworth Falls. Only a few metres away is the entrance to the Lamartine Avenue bush trail, as well as multiple walking tracks just around the corner. With bush scenery right on your doorstep, this home is the epitome of Blue Mountains living. Multiple schools are within a few minutes' drive including Blue Mountains Grammar School. Restaurants, cafes, shops, and local businesses are all only a short drive away with Wentworth Falls Village and the Wentworth Falls Country Club within easy reach.

**STYLE** - This home has been refreshed with stylish new additions throughout. The beautiful light timber flooring

[For full version visit the website](https://www.chapmanrealestate.com.au/sale/nsw/blue-mountains-surrounds/wentworth-falls/residential/house/7161530)

**Type** : House  
**Land Size** : 1012 sqm  
**View** : <https://www.chapmanrealestate.com.au/sale/nsw/blue-mountains-surrounds/wentworth-falls/residential/house/7161530>



**Kate Spence**  
02 4739 6200



**Hayley Clifton**  
02 4782 5045

# 16 VIEW ROAD, WENTWORTH FALLS

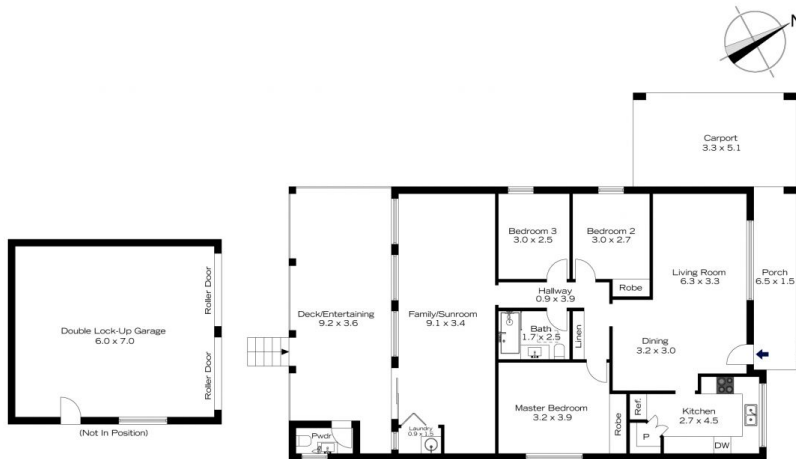


**INTERNAL**  
113 m<sup>2</sup>  
**EXTERNAL**  
61 m<sup>2</sup>  
**TOTAL**  
174 m<sup>2</sup>



The floor plan is not to scale; measurements are indicative and in metres. All features included in this 3D plan are for inspiration purposes only. This is not an exact replica of the property or the position of exterior elements. Plans should not be relied on. Interested parties should make and rely on their own enquiries.

# 16 VIEW ROAD, WENTWORTH FALLS



**INTERNAL**  
113 m<sup>2</sup>  
**EXTERNAL**  
61 m<sup>2</sup>  
**TOTAL**  
174 m<sup>2</sup>



The floor plan is not to scale; measurements are indicative and in metres. Exterior elements are not in position. Plans should not be relied on. Interested parties should make and rely on their own enquiries.