



24 Dawn Crescent Mount Riverview NSW

3 1 1

LOCATION - Nestled in the quiet and leafy neighbourhood of Mt Riverview, and with easy access to transport, bush walks local shops and bus (approx. 400m) and approx. 500 m to local Public School.

STYLE - Single level clad and tiled roof on a level corner block of approx. 784m².

LAYOUT - Living - dining, 3 bedrooms and bathroom. Laundry at rear and garage under main roof.

FEATURES - Offering a great location, a good sized block and so much potential, this is a fabulous entry level into the much sought after lower Blue Mountains.

Disclaimer:

All information contained herein is gathered from sources we believe to be reliable. However, we cannot guarantee

[For full version visit the website](https://www.chapmanrealestate.com.au)

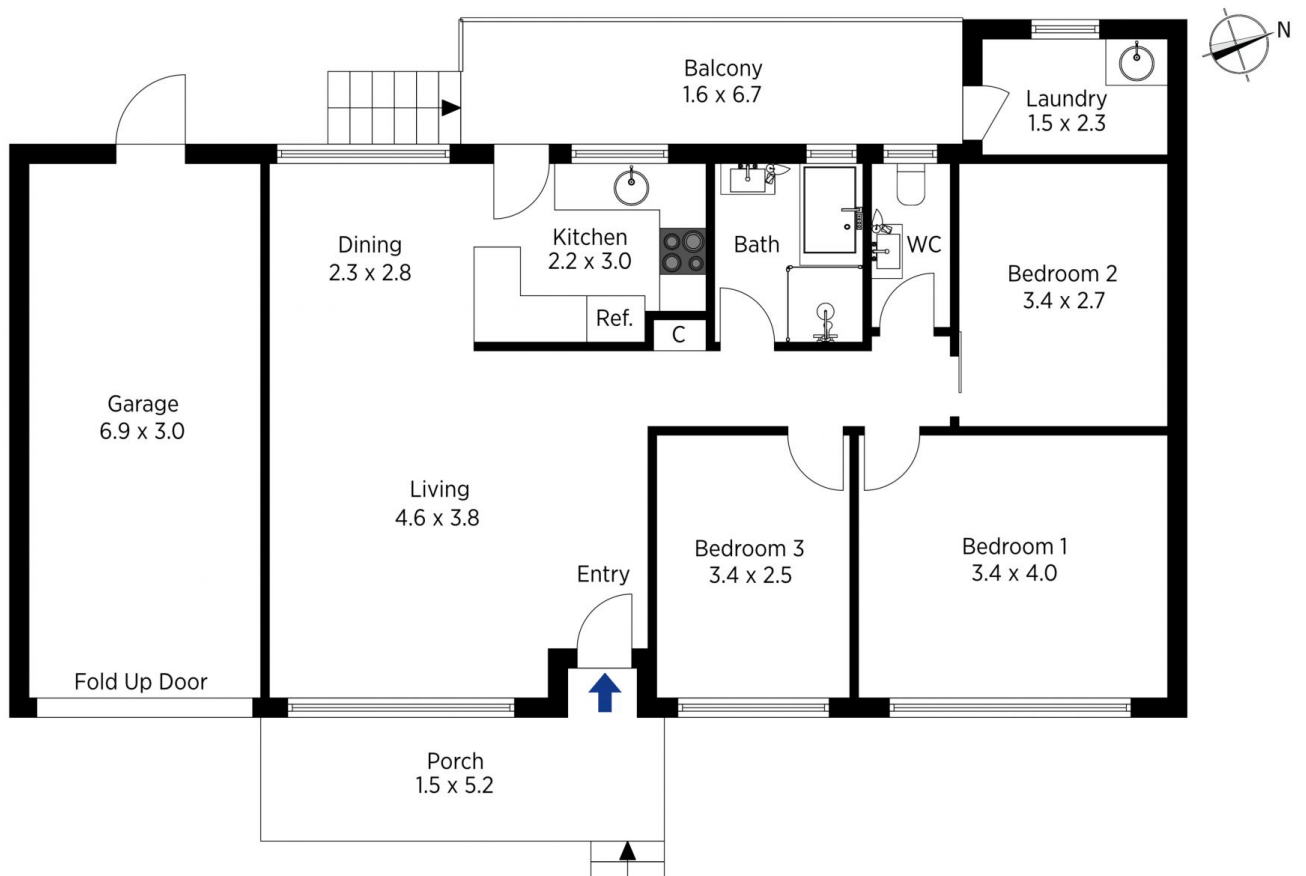
Type : House
Price : \$ 625,000
Land Size : 784 sqm
View : <https://www.chapmanrealestate.com.au/sale/nsw/hawkesbury/mount-riverview/residential/house/7161523>



James Simadas
02 4782 5045



Kate Spence
02 4739 6200



The floor plan is not to scale; measurements are indicative and in metres. Exterior elements are not in position. Plans should not be relied on. Interested parties should make and rely on their own enquiries.

Produced by DIAKRIT

24 Dawn Crescent, Mount Riverview

Chapman