



31 Statham Avenue Faulconbridge NSW

4 2 2

LOCATION - Ideally positioned on a corner block, in a very sought after and family friendly pocket of Faulconbridge, within 1km (or less) of local shops, public & high schools and only moments from Buttenshaw Park & Springwood Aquatic Centre.

STYLE - 1960s single level classic brick home with flat metal roof on low maintenance, near level block of 968 m2 (approx.) with stunning north easterly outlook and timeless feel.

LAYOUT - Two separate living areas, open plan kitchen/dining/meals area which flows into large family lounge room bathed in sunlight and convenient sliding door access to both the outside areas being the front porch and the enclosed side courtyard, 4 double bedrooms all with built in robes, master with original ensuite, additional

Type : House
Price : \$ 1,100,000
Land Size : 968 sqm
View : <https://www.chapmanrealestate.com.au/sale/nsw/hawkesbury/faulconbridge/residential/house/7161519>



Helen Harris
02 4751 8266

[For full version visit the website](https://www.chapmanrealestate.com.au)

Internal Area : 158 sqm approx.
 External Area : 33 sqm approx.
 Total Area : 191 sqm approx.



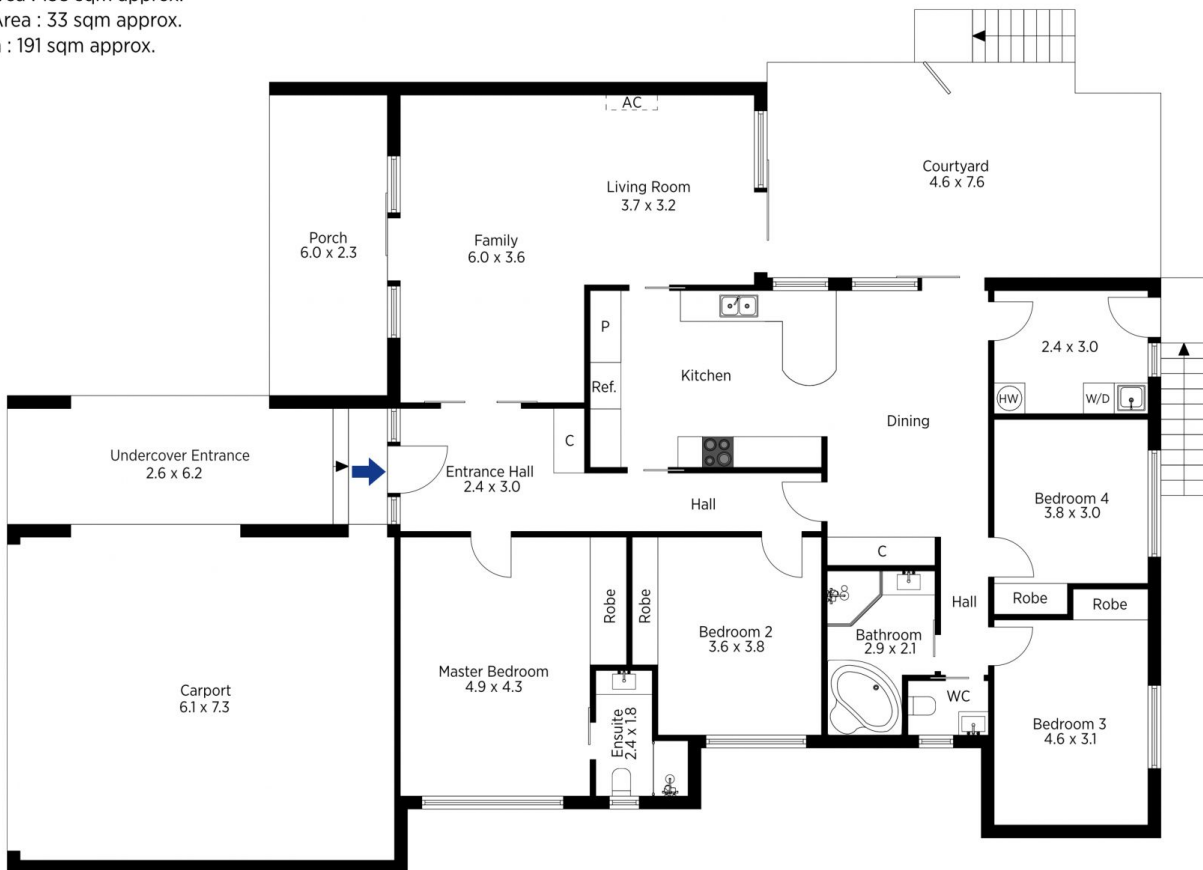
The floor plan is not to scale; measurements are indicative and in metres. All features included in this 3D plan are for inspiration purposes only. This is not an exact replica of the property or the position of exterior elements. Plans should not be relied on. Interested parties should make and rely on their own enquiries.

Produced by DIAKRIT

31 Statham Avenue, Falconbridge

Chapman

Internal Area : 158 sqm approx.
 External Area : 33 sqm approx.
 Total Area : 191 sqm approx.



The floor plan is not to scale; measurements are indicative and in metres. Exterior elements are not in position. Plans should not be relied on. Interested parties should make and rely on their own enquiries.

Produced by DIAKRIT

31 Statham Avenue, Falconbridge

Chapman