



27 Hughes Avenue Lawson NSW

3 2

LOCATION - Nestled in a quiet street backing on to a picturesque bush view, moments from Lawson village featuring an assortment of cafés, restaurants and other specialty stores. A short distance to bowling club, local co-op store and only 700m walk to Lawson Train station. With plenty of options for outdoor activities, Lawson offers a variety of walking tracks, including access to four waterfalls and natural spring at the end of Hughes Ave, Lawson aquatic centre and off leash dog park.

STYLE - Designed and constructed by the award winning Viva Homes, this solar passive straw bale home is sustainable, energy efficient and offers architectural and high quality finishes.

Type : House
Price : \$ 1,165,987
Land Size : 1929 sqm
View : <https://www.chapmanrealestate.com.au/sale/nsw/blue-mountains-surrounds/lawson/residential/house/7161517>

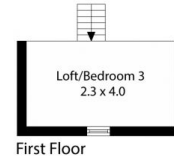
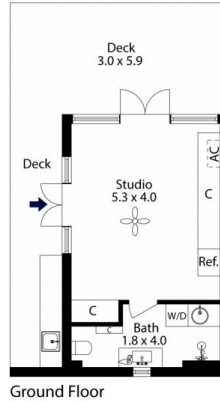
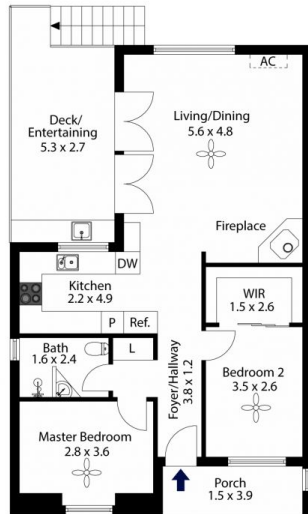


Jonathan Crisp
02 4751 8266

[For full version visit the website](https://www.chapmanrealestate.com.au)

<https://www.chapmanrealestate.com.au>

27 HUGHES AVENUE, LAWSON



INTERNAL
108 m²
EXTERNAL
48 m²
TOTAL
156 m²



The floor plan is not to scale; measurements are indicative and in metres. Exterior elements are not in position. Plans should not be relied on. Interested parties should make and rely on their own enquiries.

27 HUGHES AVENUE, LAWSON



INTERNAL
108 m²
EXTERNAL
48 m²
TOTAL
156 m²



The floor plan is not to scale; measurements are indicative and in metres. All features included in this 3D plan are for inspiration purposes only. This is not an exact replica of the property or the position of exterior elements. Plans should not be relied on. Interested parties should make and rely on their own enquiries.