



7 Tygh Street Lapstone NSW

4 2 1

LOCATION: Situated in a highly regarded pocket of Lapstone. Making this an ideal lifestyle location is the convenient access to rail for Sydney commuters, national park surrounds, proximity to Penrith CBD with Nepean River & within 1.3km to oval, tennis & netball courts, kids park, pre-school and primary school.

STYLE: Proudly elevated single level family home of brick construction and tile roof.

LAYOUT: Main living room overlooking the front yard with access to the front deck, kitchen, dining, four bedrooms all with robes, two bathrooms and laundry. Back deck with a ramp that leads onto the back yard. Under house storage areas, studio and lock up single garage.

FEATURES: Ducted air-conditioning. The light-filled kitchen has timber cupboards and draws with ample storage

Type : House
Price : \$ 1,030,000
Land Size : 765 sqm
View : <https://www.chapmanrealestate.com.au/sale/nsw/blue-mountains-surrounds/lapstone/residential/house/7161515>



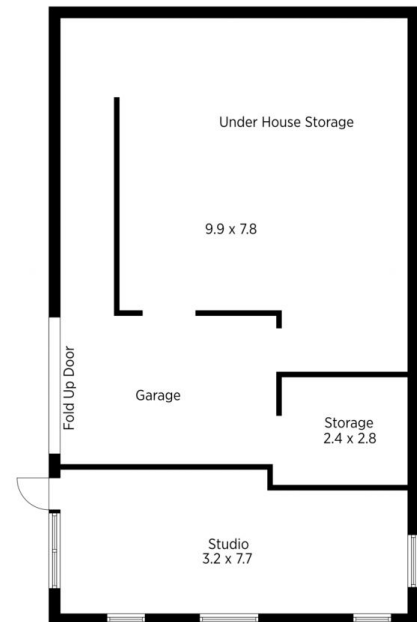
Rachel Power
02 4739 4311



Glen Power
02 4739 4311

[For full version visit the website](https://www.chapmanrealestate.com.au)

<https://www.chapmanrealestate.com.au>



The floor plan is not to scale; measurements are indicative and in metres. Exterior elements are not in position. Plans should not be relied on. Interested parties should make and rely on their own enquiries.

Produced by DIAKRIT

7 Tygh Street, Lapstone

Chapman



The floor plan is not to scale; measurements are indicative and in metres. All features included in this 3D plan are for inspiration purposes only. This is not an exact replica of the property or the position of exterior elements. Plans should not be relied on. Interested parties should make and rely on their own enquiries.

Produced by DIAKRIT

7 Tygh Street, Lapstone

Chapman