



55 Moore Crescent Faulconbridge NSW

4 2 2

LOCATION - Proudly set on the high side of a quiet cul de sac within 750m of primary & high schools, convenient to parks, walks, sporting fields, aquatic centre, 600m stroll to local shops and a 2.5km drive to Springwood village.

STYLE - Well maintained single level home of brick construction and tile roof.

LAYOUT - Two separate living areas including formal lounge and family room off the kitchen flowing to outdoor space, dining room, four bedrooms in total (three with built in wardrobes), three way main bathroom and ensuite bathroom to main bed.

FEATURES - Updated kitchen with stone benchtops, dishwasher, double sink and breakfast bar open to family room, ducted reverse cycle A/C to all rooms, floating floorboards with carpet to main lounge, great flow from

Type : House
Price : \$ 903,000
Land Size : 934.6 sqm
View : <https://www.chapmanrealestate.com.au/sale/nsw/hawkesbury/faulconbridge/residential/house/7161510>



Mark Poole
02 4751 8266

[For full version visit the website](https://www.chapmanrealestate.com.au)

<https://www.chapmanrealestate.com.au>

Internal Area : 167 sqm approx.
External Area : 22 sqm approx.
Total Area : 189 sqm approx.



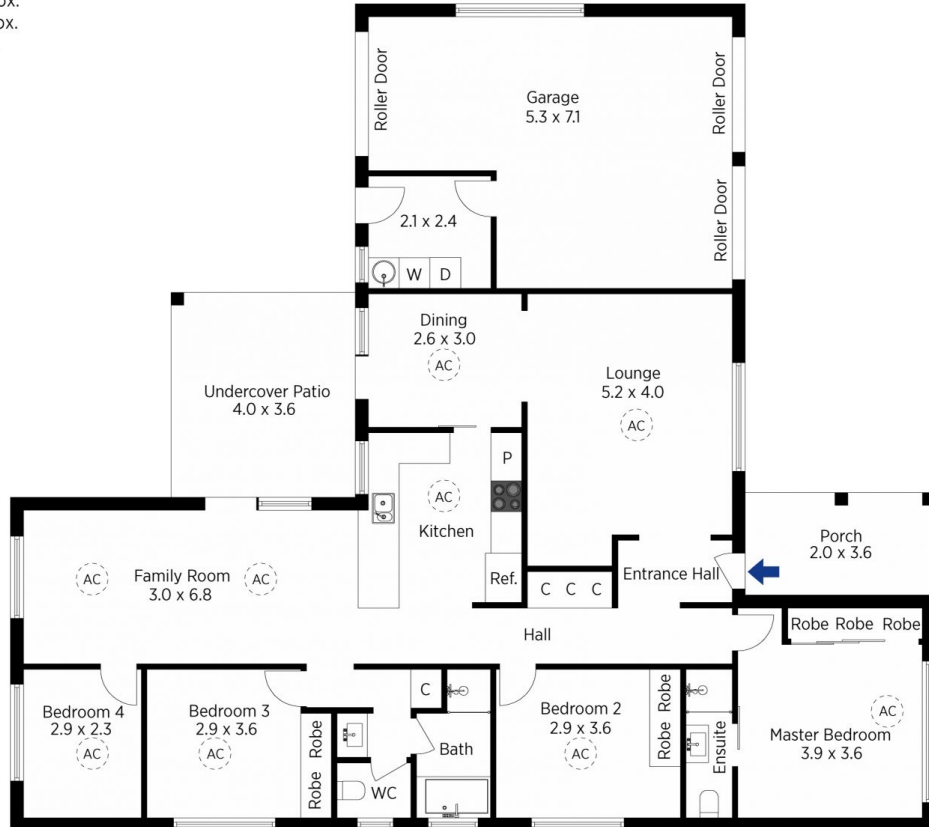
The floor plan is not to scale; measurements are indicative and in metres. All features included in this 3D plan are for inspiration purposes only. This is not an exact replica of the property or the position of exterior elements. Plans should not be relied on. Interested parties should make and rely on their own enquiries.

Produced by DIAKRIT

55 Moore Crescent, Faulconbridge

Chapman

Internal Area : 167 sqm approx.
External Area : 22 sqm approx.
Total Area : 189 sqm approx.



The floor plan is not to scale; measurements are indicative and in metres. Exterior elements are not in position. Plans should not be relied on. Interested parties should make and rely on their own enquiries.

Produced by DIAKRIT

55 Moore Crescent, Faulconbridge

Chapman