



292 Hawkesbury Road Winmalee NSW

3 1 2

LOCATION - Conveniently located just 170m to local shops and bus, and within 2km of schools, parks, sporting fields and the amenity of Winmalee Shopping Village.

STYLE - Single level clad cottage with tile roof.

LAYOUT - Main house has a comfortable main living room, dining space, three bedrooms all with built in wardrobes and ceiling fans, updated main bathroom and internal laundry with 2nd toilet. The old double garage has been converted to a large studio, work from home space or rumpus room with additional utility/yoga room attached.

FEATURES - Updated kitchen with double sink, reverse cycle A/C and gas bayonet for heating, very flat yard with a private front garden shielded from the street and undercover space at the rear, large separate double lock up garage with workshop space and additional off street

Type : House
Price : \$ 831,542
Land Size : 695.5 sqm
View : <https://www.chapmanrealestate.com.au/sale/nsw/hawkesbury/winmalee/residential/house/7161509>



Mark Poole
02 4751 8266



Claudia Hayes
02 4751 8266

[For full version visit the website](https://www.chapmanrealestate.com.au)

<https://www.chapmanrealestate.com.au>

Internal Area : 204 sqm approx.
 External Area : 34 sqm approx.
 Total Area : 238 sqm approx.



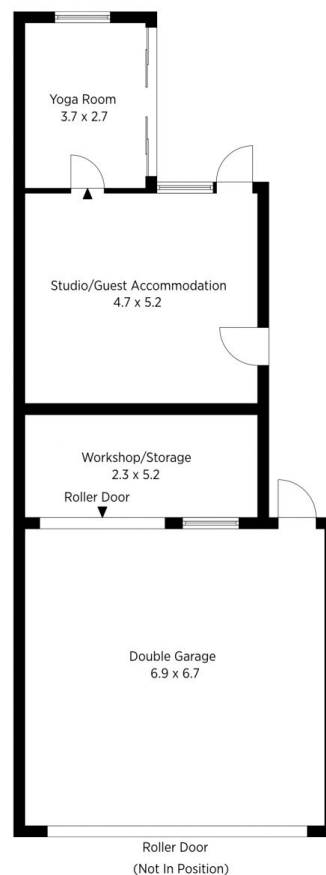
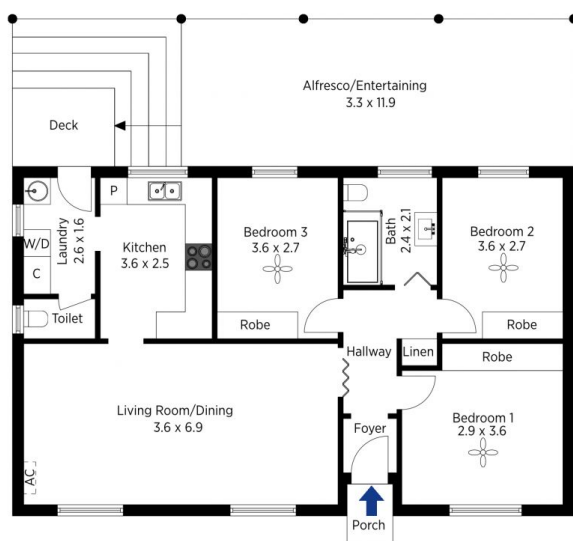
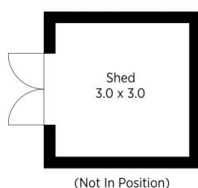
The floor plan is not to scale; measurements are indicative and in metres. All features included in this 3D plan are for inspiration purposes only. This is not an exact replica of the property or the position of exterior elements. Plans should not be relied on. Interested parties should make and rely on their own enquiries.

Produced by DIAKRIT

292 Hawkesbury Road, Winmalee

Chapman

Internal Area : 204 sqm approx.
 External Area : 34 sqm approx.
 Total Area : 238 sqm approx.



The floor plan is not to scale; measurements are indicative and in metres. Exterior elements are not in position. Plans should not be relied on. Interested parties should make and rely on their own enquiries.

Produced by DIAKRIT

292 Hawkesbury Road, Winmalee

Chapman