



## 6 Badham Street Faulconbridge NSW

4 2 8

**LOCATION** - Privacy assured in Eurama Estate, with easy access to bushwalks, rail & Great Western Highway.

**STYLE** - Single level brick & colorbond home built in 2015, on a grassy approx. 1 acre around the home and 2.01 ha in total.

**LAYOUT** - 2 separate & generous living rooms, 4 double sized bedrooms, main with walk-in robe & ensuite, 2 bathrooms, open plan dine/lounge/kitchen flows to alfresco entertaining & yard, oversized double garage with internal access.

**FEATURES** - 6 car (10.5m x 10.5m) American barn shed with power, ample space around the home for parking or playing, superb bush views, track for bikes, walk to creek, contemporary design throughout, huge 1200mm entrance door & hallway, ducted air conditioning, natural gas

**Type** : House

**Land Size** : 2.01 ha

**View** : <https://www.chapmanrealestate.com.au/sale/nsw/hawkesbury/faulconbridge/residential/house/7161503>



**Jonathan Crisp**  
02 4751 8266



**Claudia Hayes**  
02 4751 8266

[For full version visit the website](https://www.chapmanrealestate.com.au)

<https://www.chapmanrealestate.com.au>

Internal Area : 218 sqm approx.  
External Area : 73 sqm approx.  
Total Area : 291 sqm approx.



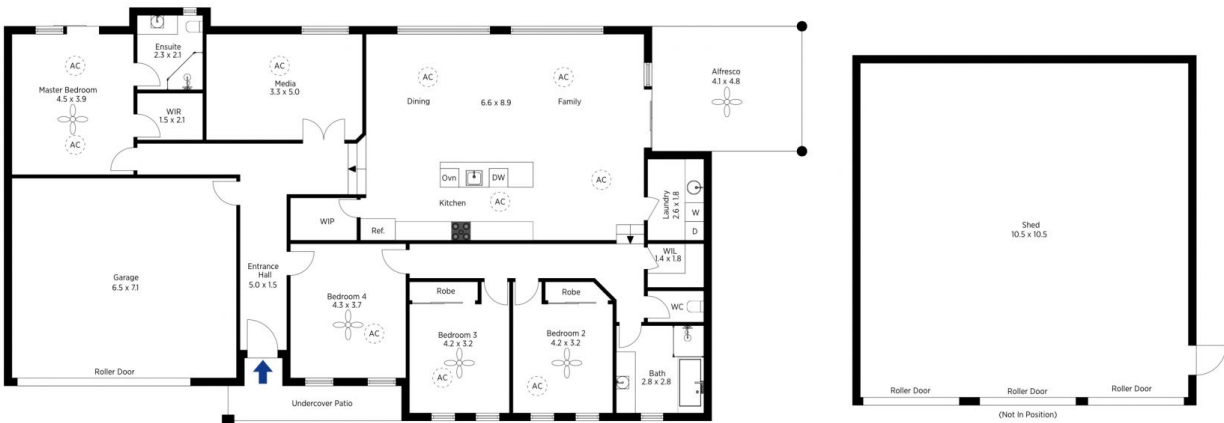
The floor plan is not to scale; measurements are indicative and in metres. All features included in this 3D plan are for inspiration purposes only. This is not an exact replica of the property or the position of exterior elements. Plans should not be relied on. Interested parties should make and rely on their own enquiries.

Produced by DIAKRIT

6 Badham Street, Faulconbridge

Chapman

Internal Area : 218 sqm approx.  
External Area : 73 sqm approx.  
Total Area : 291 sqm approx.



The floor plan is not to scale; measurements are indicative and in metres. Exterior elements are not in position. Plans should not be relied on. Interested parties should make and rely on their own enquiries.

Produced by DIAKRIT

6 Badham Street, Faulconbridge

Chapman