



10 Flinders Street Lawson NSW

2 1 2

LOCATION - Conveniently located 1km for the Lawson village featuring restaurants, shops, cafes, bowling club, hotel, supermarket and train station. Moments from Lawson Industrial Park, local bush walks, sporting oval and dog park.

STYLE - Single level fibro home with tin roof set 986.4m2 (approx.) block with the main access via Cascade St but also Flinders St.

LAYOUT - Combined lounge and dining room, kitchen leading through to bathroom, two large bedrooms both with built in robes.

FEATURES - Mostly flat, usable block with a wide frontage

[For full version visit the website](https://www.chapmanrealestate.com.au/sale/nsw/blue-mountains-surrounds/lawson/residential/house/7161500)

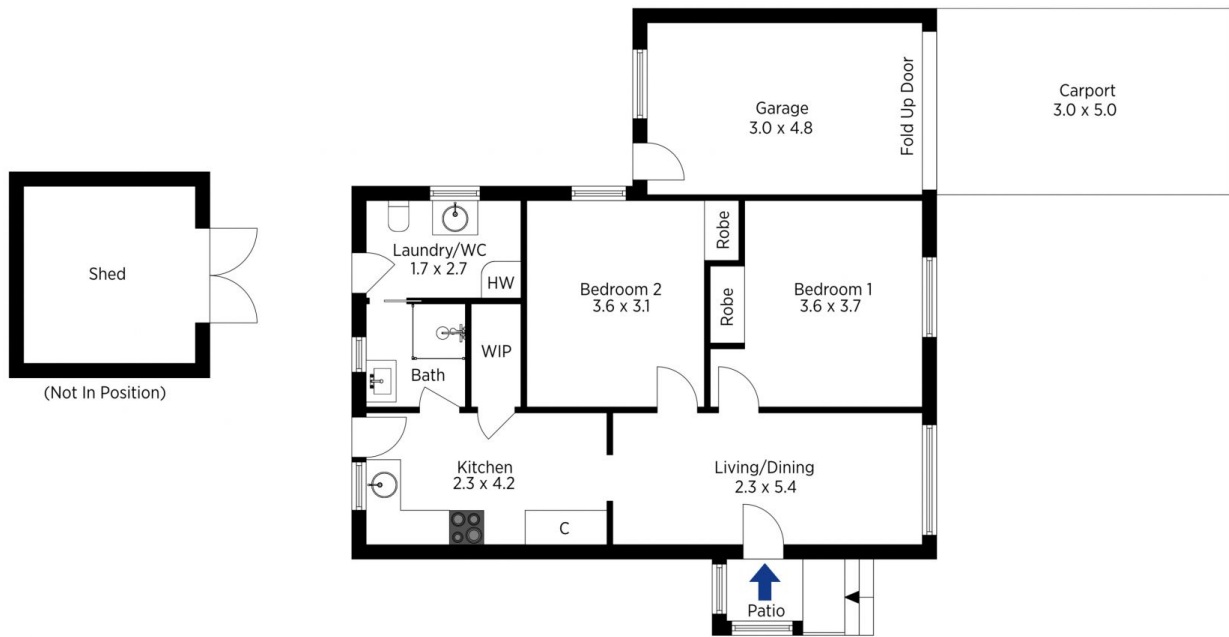
Type : House
Price : \$ 651,000
Land Size : 986.4 sqm
View : <https://www.chapmanrealestate.com.au/sale/nsw/blue-mountains-surrounds/lawson/residential/house/7161500>



Jonathan Crisp
02 4751 8266



Kate Spence
02 4739 6200



The floor plan is not to scale; measurements are indicative and in metres. Exterior elements are not in position. Plans should not be relied on. Interested parties should make and rely on their own enquiries.

Produced by DIAKRIT

10 Flinders Street, Lawson

Chapman



The floor plan is not to scale; measurements are indicative and in metres. All features included in this 3D plan are for inspiration purposes only. This is not an exact replica of the property or the position of exterior elements. Plans should not be relied on. Interested parties should make and rely on their own enquiries.

Produced by DIAKRIT

10 Flinders Street, Lawson

Chapman