



4 Bridge Lane Woodford NSW

3 1 1

LOCATION - Just a 500m stroll to Woodford railway station and 700m to cafe with easy highway access and short drive to the convenience of Hazelbrook Village.

STYLE - Single level home of brick veneer construction and tile roof.

LAYOUT - Two living spaces separated by dining room, three bedrooms including good size main bed all with integrated ceiling fans, updated bathroom with separate toilet and renovated internal laundry, and under house utility room converted to hair salon.

FEATURES - Centrally positioned kitchen open to dining space, polished cypress pine floors, reverse cycle air conditioning, five ceiling fans, gorgeous slow combustion wood burning fireplace, natural gas cooking and hot water, converted rear balcony overlooking the grassy backyard

Type : House
Price : \$ 737,700
Land Size : 734 sqm
View : <https://www.chapmanrealestate.com.au/sale/nsw/blue-mountains-surrounds/woodford/residential/house/7161497>



Mark Poole
02 4751 8266

[For full version visit the website](https://www.chapmanrealestate.com.au)

<https://www.chapmanrealestate.com.au>

Internal Area : 131 sqm approx.
 External Area : 40 sqm approx.
 Total Area :171 sqm approx.



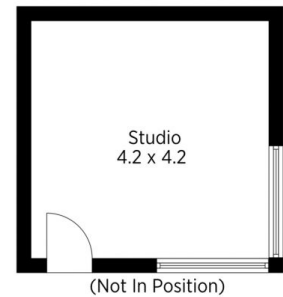
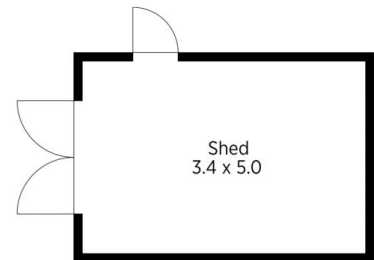
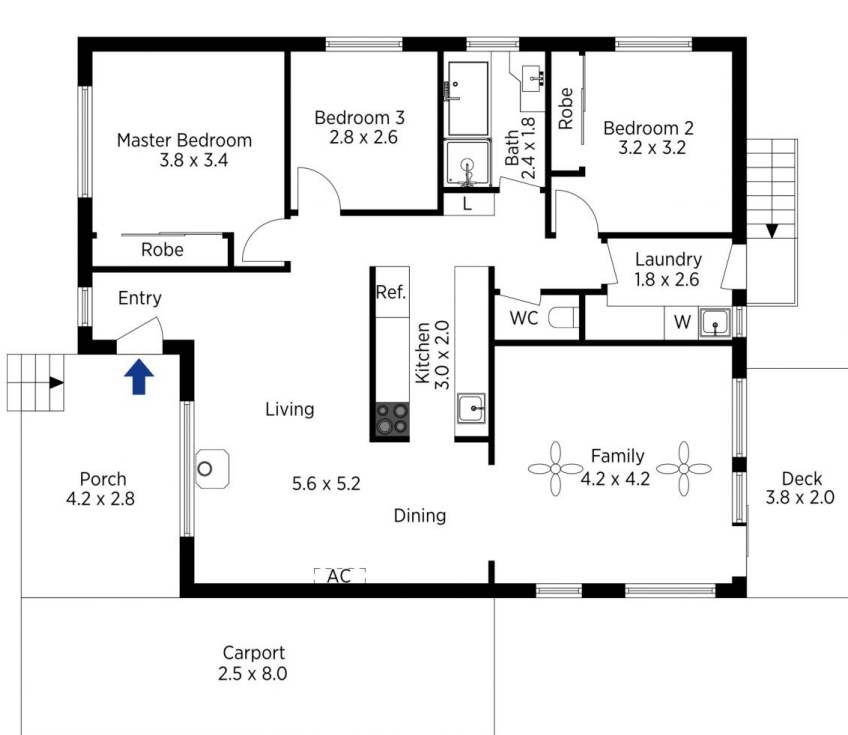
The floor plan is not to scale; measurements are indicative and in metres. All features included in this 3D plan are for inspiration purposes only. This is not an exact replica of the property or the position of exterior elements. Plans should not be relied on. Interested parties should make and rely on their own enquiries.

Produced by DIAKRIT

4 Bridge Lane, Woodford

Chapman

Internal Area : 131 sqm approx.
 External Area : 40 sqm approx.
 Total Area :171 sqm approx.



The floor plan is not to scale; measurements are indicative and in metres. Exterior elements are not in position. Plans should not be relied on. Interested parties should make and rely on their own enquiries.

Produced by DIAKRIT

4 Bridge Lane, Woodford

Chapman